



National Association for
Regulatory Administration

INDIANA KEY INDICATORS
FOR
CENTERS, HOMES, LEGALLY
LICENSED EXEMPT HOMES
(LLEP), AND MINISTRY
FACILITIES

400 South Fourth Street, Suite 754E, Minneapolis, Minnesota, 55415

888-674-7052

www.naralicensing.org

U.S. Federal ID No. 54-1542015

Indiana Key Indicators for Centers, Homes, Legally Licensed Exempt Homes (LLEP), and Ministry Facilities

Richard Fiene, Ph.D.

National Association for Regulatory Administration

Research Institute for Key Indicators

January 2019

The purpose of this report is to provide the five sets of Key Indicators for Centers, Homes, Legally Licensed Exempt Homes (LLEP), Ministry CCDF (Child Care Development Fund) and Registered Ministry facilities for the state of Indiana. The report will provide basic demographic information of each set of rules and then the specific statistical key indicators based upon the Fiene KIS Statistical Algorithms. The creation of these respective Licensing Key Indicators was from 5 data sets sent from Indiana to the author representing one year of complete data (November 2017-October 2018) on each set of rules for centers, homes, LLEP, Ministry CCDF, and registered Ministry facilities.

The Fiene KIS Statistical Algorithm and Methodology has been in use for over forty years and has been used throughout the USA and Canada to help states and provinces streamline their licensing and monitoring systems. It is presently in a fourth generation of development taking into account lessons learned over the past 40 years of research and development. Presently, the methodology is housed within the Research Institute for Key Indicators (RIKILLC) which is in strategic partnership with the National Association for Regulatory Administration (NARA) for the further development and dissemination of the KIS methodology.

The KIS methodology creates a 2 x 2 matrix for each rule and compares it to the relative frequency of overall compliance. Based upon this algorithm, specific rules are identified as key indicator rules being able to statistically predict overall compliance with other rules. The following five sets of rules have been run through these algorithms utilizing the 2017-2018 data.

Centers

The center rules represent a data base of over 2000 rules taken from over 500 facilities in which the average number of rule violations per facility was 5.26. The range of violations was from 0 to 51. Thirteen (13%) percent of the facilities had no violations. See the Appendix for a graphical display.

Homes

The home rules represent a data base of over 500 rules taken from over 2000 facilities in which the average number of rule violations per facility was 2.27. The range of violations was from 0 to 34. Forty (40%) percent of the facilities had no violations. Please see the Appendix for a graphical display of the range of violations.

Registered Ministry

The registered ministry rules represent a data base of over 300 rules taken from over 1000 facilities in which the average number of rule violations per facility was 3.04. The range of violations was from 0 to 20. Twenty-six (26%) percent of the facilities had no violations.

Ministry CCDF

The ministry CCDF applicable rules represent a data base of approximately 40 rules taken from just over 500 facilities in which the average number of rule violations per facility was 4.51. The range of violations was from 0 to 44. Thirty-one (31%) percent of the facilities had no violations.

LLEP

The LLEP rules represent a data base of just under 40 rules taken from just over 500 facilities in which the average number of rule violations per facility was 1.09. The range of violations was from 0 to 24. Sixty-five (65%) percent of the facilities had no violations.

The Key Indicators

Centers

<i>Rule</i>	<i>Phi*</i>	<i>Summary Content**</i>
470 IAC 3-4.7-100	.59	Hazard Items
470 IAC 3-4.7-101	.33	Electrical Safety
470 IAC 3-4.7-113	.51	Bathrooms
470 IAC 3-4.7-114	.34	Water Supply and Plumbing
470 IAC 3-4.7-116	.66	Kitchen and Food Preparation
470 IAC 3-4.7-13	.36	Reporting Child Abuse & Neglect
470 IAC 3-4.7-135	.35	Infant Food Preparation & Storage
470 IAC 3-4.7-32	.26	Staff Orientation
470 IAC 3-4.7-36	.47	Children's Administrative Records
470 IAC 3-4.7-41	.42	Staff, Substitutes & Volunteer Records
470 IAC 3-4.7-48	.26	Staff Child Ratios
470 IAC 3-4.7-60	.27	Written Program Plans
470 IAC 3-4.7-63	.42	Education Equipment & Materials

470 IAC 3-4.7-66	.41	Playground & Outdoor Safety
470 IAC 3-4.7-99	.56	Building Maintenance

Homes

<u>Rule</u>	<u>Phi</u>	<u>Summary Content</u>
470 IAC 3-1.1-28.5(c)(1)	.63	TB Test
470 IAC 3-1.1-32(a)(3)	.37	Criminal History
470 IAC 3-1.1-32(a)(5)	.56	CPR/First Aid
470 IAC 3-1.1-32(a)(6)(a)	.48	Enrollment
470 IAC 3-1.1-32(a)(6)(d)	.25	Adults authorized to pick up
470 IAC 3-1.1-33.5(b)(3)	.32	Training Child Abuse & Neglect
470 IAC 3-1.1-33.5(d)	.31	Pediatric CPR Training Certification
470 IAC 3-1.1-34(a)	.39	Adult Physical Exam
470 IAC 3-1.1-37(a)(1)	.26	Parent Sign Enrollment Form
470 IAC 3-1.1-37(a)(2)	.31	Release Medical
470 IAC 3-1.1-37(b)(1)	.49	Child Participation Activities
470 IAC 3-1.1-37(b)(2)	.43	Immunizations
470 IAC 3-1.1-40(a)	.25	Trip Permissions
470 IAC 3-1.1-41(a)	.32	Discipline Policy to Parents
470 IAC 3-1.1-45(a)	.52	Hazard Free
470 IAC 3-1.1-48(c)(1)	.30	Inaccessible Cleaning Supplies
IC 12-17.2-5-3(d)(2)(e)	.30	Criminal History
IC 12-17.2-5-3.5(a)(1)	.39	Drug Testing

Registered Ministry

<u>Rule</u>	<u>Phi</u>	<u>Summary Content</u>
470 IAC 3-4.5-4(1)	.97	Surfaces Clean
470 IAC 3-4.5-4(2)	.62	Bathrooms, Sinks, Toilets
470 IAC 3-4.5-4(4)	.28	Screens in Windows

470 IAC 3-4.5-5(a)	.34	Food Services Clean
470 IAC 3-4.5-5(b)	.27	Food Safety
470 IAC 3-4.5-5(c)	.38	Refrigerator & Freezer
470 IAC 3-4.5-(e)(2)	.42	Cleaning
470 IAC 3-4.5-5(f)	.60	Food Storage
470 IAC 3-4.5-5(g)	.33	Hand Washing Hygiene
470 IAC 3-4.5-6(a)	.31	Cribs
470 IAC 3-4.5-6(b)	.40	Handwashing
470 IAC 3-4.5-6(c)	.34	Ill Children
470 IAC 3-4.5-6(d)	.50	Diapering
IC12-17.2-6-11(a)(2)	.48	Immunizations
IC12-17.2-6-14(1)	.38	Criminal History Check
IC12-17.2-6-14(2)(c)	.39	Allegation of Child Abuse/Neglect
IC12-17.2-6-7	.31	Enrollment Records

Ministry CCDF

<u>Rule</u>	<u>Phi</u>	<u>Summary Content</u>
IC 12-17.2-3.5-10(b)(1)&(2)	.31	Fire Drills
IC 12-17.2-3.5-6	.62	TB Test
IC 12-17.2-3.5-8	.67	CPR
IC 12-17.2-3.5.5(a)(2)	.34	Running Water
IC 12-17.2-3.5-11(a)	.75	Hazard Free
IC 12-17.2-3.5-4.1	.61	Child Abuse Registry
IC 12-17.2-3.5-12	.58	Fingerprints
IC 12-17.2-3.5-11.1	.64	Immunizations
IC 12-17.2-3.5-12.1	.74	No Smoking/Drugs
IC 12-17.2-3.5-5.5(a)	.50	Supervision
IC 12-17.2-3.5-5.5(b)	.74	Infant/Toddler Training
IC 12-17.2-3.5-7(b)	.52	Discipline

IC 12-17.2-3.5-8(b)(3)	.65	Child Abuse and Neglect
IC 12-17.2-3.5-8(b)(4)	.86	Orientation
IC 12-17.2-3.5-5(c)&(d)	.51	Transportation
IC 12-17.2-3.5-5(c)	.67	Records

LLEP

<u>Rule</u>	<u>Phi</u>	<u>Summary Content</u>
12-17.2-3.5-8	.69	CPR Certification
12-17.2-3.5-4.1	.25	State Registry
12-17.2-3.5-12	.26	Finger prints
12-17.2-3.5-12.1	.44	Drug Test
12-17.2-3.5-5.5(a)	.28	Supervision
12-17.2-3.5-7(b)	.30	Discipline
12-17.2-3.5-8(b)(3)	.31	Child Abuse and Neglect
12-17.2-3.5-8(c)	.32	Records
12-17.2-3.5-5(e)	.35	Daily Activities
12-17.2-3.5-6	.44	TB Test

* All results significant at $p < .001$.

** See Appendix for detailed content.

Conclusion

The above results provide Indiana staff with the Key indicators for their respective licensing rules for Centers (15), Homes (18), LLEP (10), and Ministry (CCDF16/17) facilities. There is a good deal of overlap in the Key Indicators for the various service types (Centers, Homes, LLEP, Ministry Programs). This is usually the case with Key Indicators in that they are very consistent across service types and over time. It appears that non-optimal performing facilities have difficulty complying with these KI Rules. Also, the Indiana KI Rules overlap very nicely with the original 13 Key Indicators of Quality Care published by ASPE in 2002. Again, this is not surprising and has been a consistent result over the years.

I have reported all the Key Indicators that were significant at the $p < .001$ level of significance. Indiana staff can decide if they want to use all the Key Indicators for each service type or be more selective in only using the most significant Key Indicators. For example, with the Ministry and LLEP Rules, there are many more Key Indicators than usual for the total number of rules.

Please see the Appendix for the KIS Algorithm used for determining the above indicators.

APPENDIX

Theory of Regulatory Compliance Algorithm (Fiene KIS Algorithm)

- 1) $\Sigma R = C$
- 2) Review C history x 3 yrs
- 3) $NC + C = CI$
- 4) If $CI = 100 \rightarrow KI$
- 5) If $KI > 0 \rightarrow CI$ or if $C < 100 \rightarrow CI$
- 6) If $RA (NC\% > 0) \rightarrow CI$
- 7) $KI + RA = DM$
- 8) $KI = ((A)(D)) - ((B)(E)) / \text{sqrt}((W)(X)(Y)(Z))$
- 9) $RA = \Sigma R1 + \Sigma R2 + \Sigma R3 + \dots \Sigma Rn / N$
- 10) $(TRC = 99\%) + (\phi = 100\%)$
- 11) $(CI < 100) + (CIPQ = 100) \rightarrow KI (10\% CI) + RA (10-20\% CI) + KIQP (5-10\% \text{ of } CIPQ) \rightarrow OU$

Legend:

R = Rules/Regulations/Standards

C = Compliance with Rules/Regulations/Standards

NC = Non-Compliance with Rules/Regulations/Standards

CI = Comprehensive Instrument for determining Compliance

ϕ = Null

KI = Key Indicators; $KI \geq .26+$ Include; $KI \leq .25$ Null, do not include

RA = Risk Assessment

$\Sigma R1$ = Specific Rule on Likert Risk Assessment Scale (1-8; 1 = low risk, 8 = high risk)

N = Number of Stakeholders

DM = Differential Monitoring

TRC = Theory of Regulatory Compliance

CIPQ = Comprehensive Instrument Program Quality

KIPQ = Key Indicators Program Quality

OU = Outcomes

A = High Group + Programs in Compliance on Specific Compliance Measure (R1...Rn).

B = High Group + Programs out of Compliance on Specific Compliance Measure (R1...Rn).

E = Low Group + Programs in Compliance on Specific Compliance Measure (R1...Rn).

D = Low Group + Programs out of Compliance on Specific Compliance Measure (R1...Rn).

W = Total Number of Programs in Compliance on Specific Compliance Measure (R1...Rn).

X = Total Number of Programs out of Compliance on Specific Compliance Measure (R1...Rn).

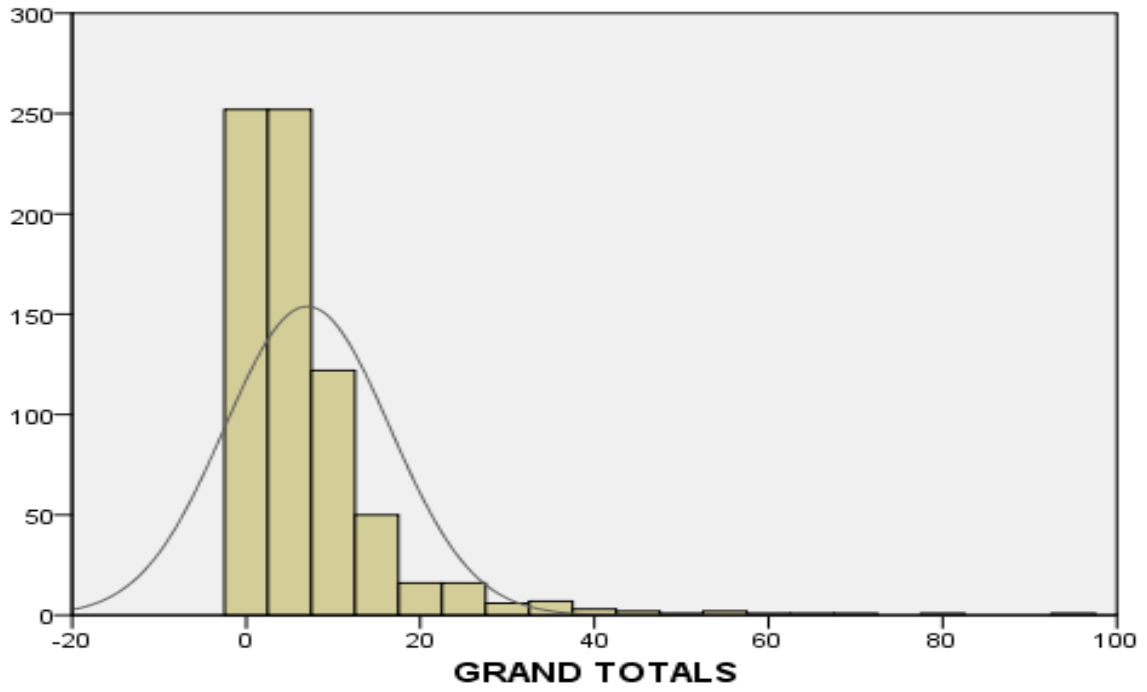
Y = Total Number of Programs in High Group ($\Sigma R = 98+$).

Z = Total Number of Programs in Low Group ($\Sigma R \leq 97$).

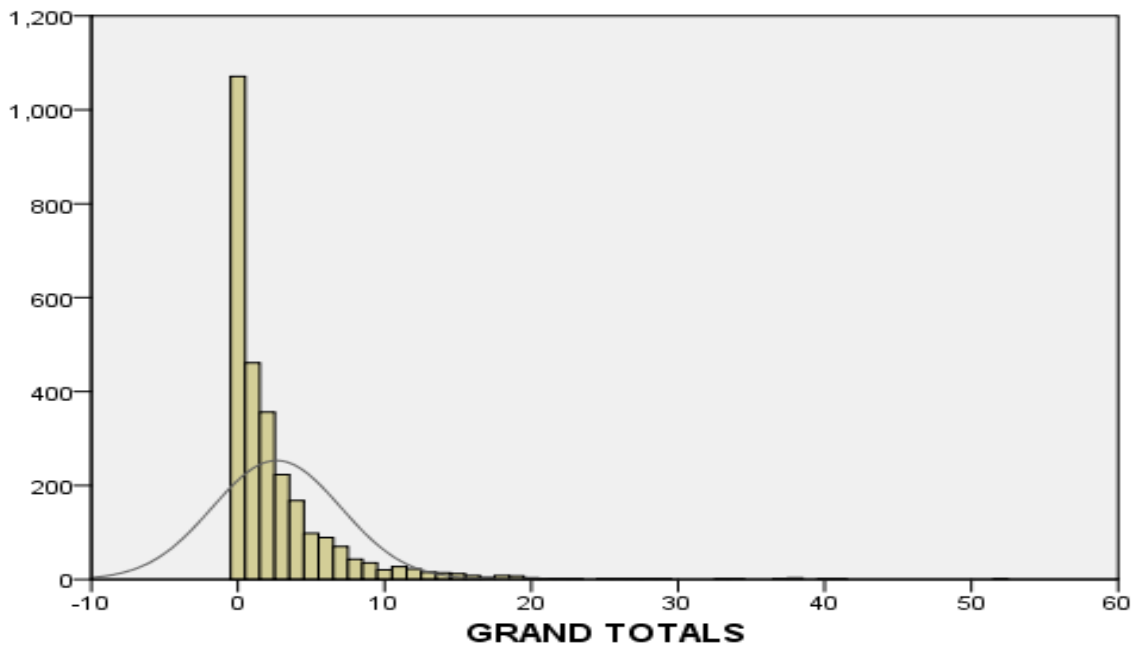
High Group = Top 25% of Programs in Compliance with all Compliance Measures (ΣR).

Low Group = Bottom 25% of Programs in Compliance with all Compliance Measures (ΣR).

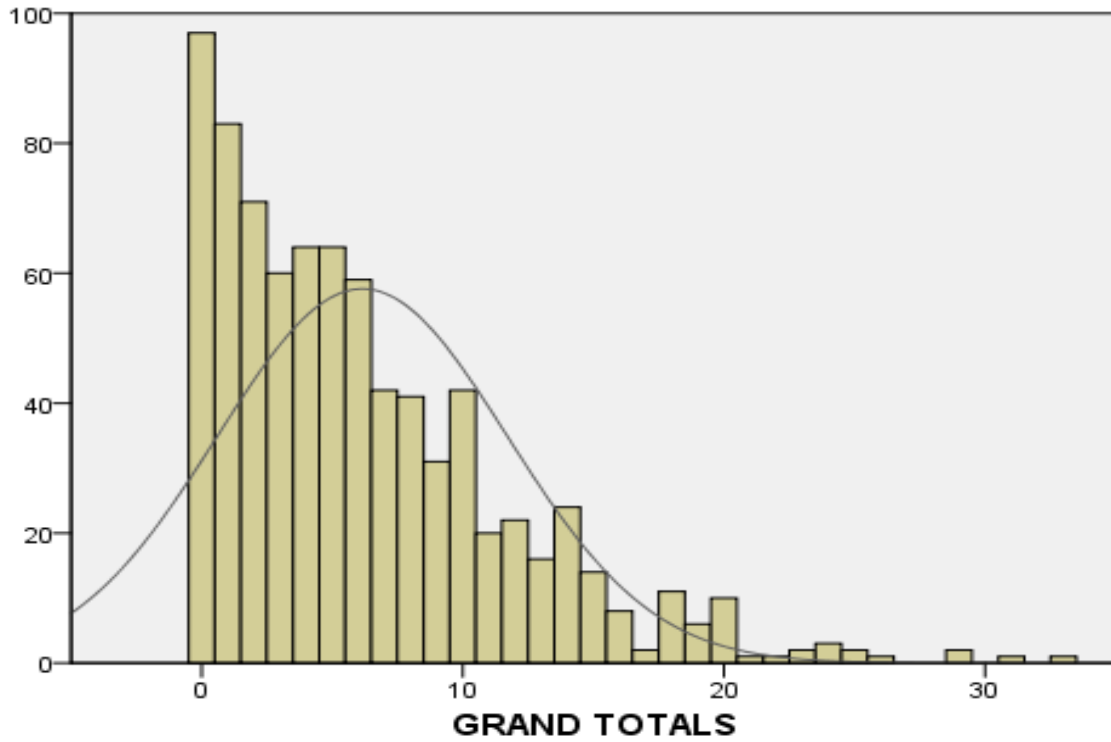
Centers Total Number of Violations



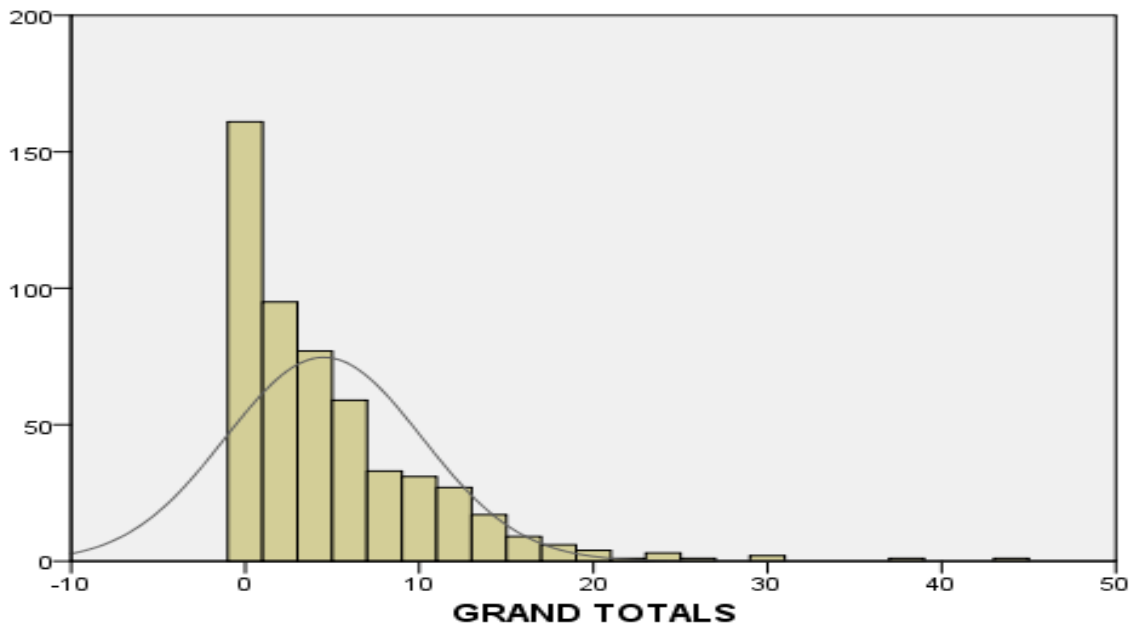
Homes Total Number of Violations



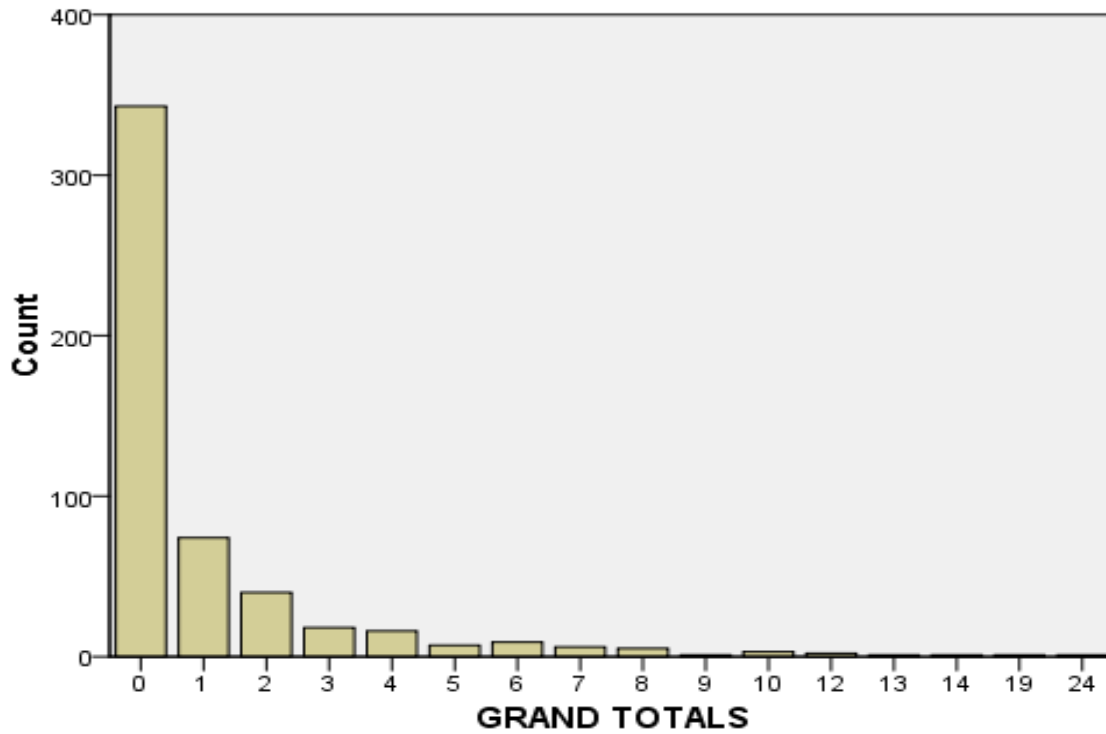
Registered Ministry Total Number of Violations



Ministry CCDF Total Number of Violations



LLEP Total Number of Violations



The above graphical displays clearly demonstrate the skewness in the licensing data. This is typical of licensing data throughout the USA and Canada.

The following graphic on the next page displays the Logic Model and Algorithm for designing and implementing the differential monitoring approach.

DIFFERENTIAL MONITORING LOGIC MODEL & ALGORITHM (DMLMA©) (Fiene, 2012): A 4th Generation ECPQIM – Early Childhood Program Quality Indicator Model

$$CI \times PQ \Rightarrow RA + KI \Rightarrow DM + PD \Rightarrow CO$$

Definitions of Key Elements:

CI = Comprehensive Licensing Tool (Health and Safety)(*Caring for Our Children*)

PQ = *ECERS-R, FDCRS-R, CLASS, CDPEs* (Caregiver/Child Interactions/Classroom Environment)

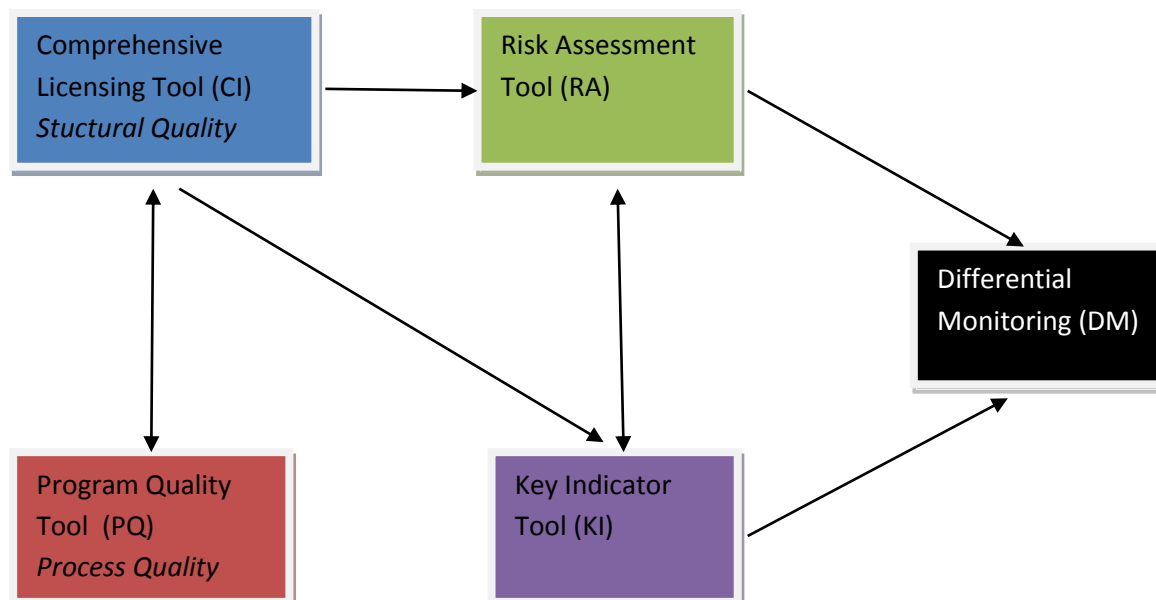
RA = Risk Assessment, (High Risk Rules)(*Stepping Stones*)

KI = Key Indicators (Predictor Rules)(*13 Key Indicators of Quality Child Care*)

DM = Differential Monitoring, (How often to visit and what to review)

PD = Professional Development/Technical Assistance/Training

CO = Child Outcomes (Complaints, Injuries, Developmental Measures)



Key Indicator Rule Details for Each Set of Rules

Center Key Indicator Rules:

470 IAC 3-4.7-100 Poisons, chemicals, and hazardous items

470 IAC 3-4.7-101 Electrical safety

470 IAC 3-4.7-113 Bathrooms

470 IAC 3-4.7-114 Water Supply and Plumbing

470 IAC 3-4.7-116 Kitchen and Food Preparation Areas

470 IAC 3-4.7-13 Reporting Child Abuse & Neglect

470 IAC 3-4.7-135 Infant Food Preparation & Storage

470 IAC 3-4.7-32 Staff Orientation

470 IAC 3-4.7-36 Children's Admission Records

470 IAC 3-4.7-41 Staff, Substitutes & Volunteer Records

470 IAC 3-4.7-48 Staff Child Ratios and Supervision

470 IAC 3-4.7-60 Written Program Plans

470 IAC 3-4.7-63 Education Equipment & Materials

470 IAC 3-4.7-66 Playground & Outdoor Safety

470 IAC 3-4.7-99 Building Maintenance

Homes Key Indicator Rules:

470 IAC 3-1.1-28.5(c)(1) TB Test - The caregiver shall maintain and make available verification of the following: Annual Mantoux tuberculin test or chest x-ray for direct child care providers and all family members over eighteen (18) years of age.

470 IAC 3-1.1-32(a)(3) Criminal History - The licensee shall maintain the following documentation in the child care home for review by the COFC: Documentation of criminal history checks on employees, volunteers, and all household members who are at least eighteen (18) years of age.

470 IAC 3-1.1-32(a)(5) CPR/First Aid - The licensee shall maintain the following documentation in the child care home for review by the COFC: Documentation of certification of a current first aid course, training in Universal Precautions, and annual CPR certification by direct child care providers.

470 IAC 3-1.1-32(a)(6)(a) Enrollment - Enrollment form for each child receiving services which shall include the following: Child's name and date of birth.

470 IAC 3-1.1-32(a)(6)(d) Adults authorized to pick up - Enrollment form for each child receiving services which shall include the following: The names of adults authorized to pick the child up from the home.

470 IAC 3-1.1-33.5(b)(3) Training Child Abuse & Neglect - Direct child care providers, including volunteers, shall receive training in the following within thirty (30) days of starting employment or volunteer work: Procedures for preventing, detecting, and reporting suspected child abuse and neglect.

470 IAC 3-1.1-33.5(d) Pediatric CPR Training Certification - At least one (1) direct child care provider shall be trained in pediatric cardiopulmonary resuscitation training annually and shall be on the premises at all times.

470 IAC 3-1.1-34(a) Adult Physical Exam - Direct child care providers who work in the home more than three (3) times a month and all members of the household having direct contact with children receiving care shall have an initial physical examination by a physician or certified nurse practitioner indicating that they are free from communicable disease, have no physical or other condition which would endanger the health or welfare of children in care, and have an annual Mantoux tuberculin test or chest x-ray.

470 IAC 3-1.1-37(a)(1) Parent Sign Enrollment Form - Prior to acceptance of children, the caregiver shall have the parent or legal guardian: complete and sign an enrollment form for the child.

470 IAC 3-1.1-37(a)(2) Release Medical - Prior to acceptance of children, the caregiver shall have the parent or legal guardian: complete and sign a release for emergency medical care for the child.

470 IAC 3-1.1-37(b)(1) Child Participation Activities - Within thirty (30) days of a child's admission, the licensee shall receive a written statement from the child's parent or legal guardian signed by a physician or a certified nurse practitioner which states the following: That the child can participate in the child care home's activities.

470 IAC 3-1.1-37(b)(2) Immunizations - Within thirty (30) days of a child's admission, the licensee shall receive a written statement from the child's parent or legal guardian signed by a physician or a certified nurse practitioner which states the following: That the child has had immunizations which are up-to-date for the child's age.

470 IAC 3-1.1-40(a) Trip Permissions - Caregiver shall obtain written parental permission before taking a child away from the child care home for field trips or any other activities.

470 IAC 3-1.1-41(a) Discipline Policy to Parents - The licensee shall provide the parent or legal guardian with a written copy of the discipline policy of the child care home.

470 IAC 3-1.1-45(a) Hazard Free - The licensee shall ensure that no conditions exist in the home or on the grounds where child care services are provided that would endanger the health, safety, or welfare of the children.

470 IAC 3-1.1-48(c)(1) Inaccessible Cleaning Supplies - Caregiver shall keep poisonous or hazardous materials that would harm children, including, but not limited to: cleaning supplies.

IC 12-17.2-5-3(d)(2)&(e) Criminal History - An applicant must submit the necessary information, forms, or consents for the division to: obtain a national criminal history background check on the applicant through the state police department under IC 10-13-3-39.

IC 12-17.2-5-3.5(a)(1) Drug Testing - A child care home shall, at no expense to the state, maintain and make available to the division upon request a copy of drug testing results for: the provider.

Registered Ministry Key Indicator Rules:

470 IAC 3-4.5-4(1) Surfaces Clean - All interior surfaces, equipment, materials, furnishings, and objects with which children will come in contact shall be well maintained, in a clean and sanitary condition, and of nontoxic durable construction.

470 IAC 3-4.5-4(2) Bathrooms, Sinks, Toilets - All restrooms shall be equipped with flush toilets and handwashing sinks and shall be ventilated to the outside. An adequate supply of water, under pressure, shall be provided at all handwashing sinks, as well as soap and disposable paper towels in dispensers. Toilet paper in dispensers shall be located at each toilet.

470 IAC 3-4.5-4(4) Screens in Windows - All open windows, doors which are kept open for other than entering and leaving, ventilators, and other outside openings shall be protected against insects by securely fastened 16 mesh screening. Cracks shall be sealed and sealing shall be in place around pipes, plumbing, and ducts.

470 IAC 3-4.5-5(a) Food Services Clean - Food Service. The kitchen and any other food preparation area shall be maintained in a clean and sanitary condition, separate from areas used for any other purpose, and shall be so located that it is not used as a throughway to other rooms or areas. The kitchen shall not be used for children's activities or naps, a dining or recreational area for adults, or as an office.

470 IAC 3-4.5-5(b) Food Safety - Food Safety. All foods provided by the facility, for children enrolled in the day care ministry, shall be from a food establishment, inspected and approved by a governmental agency. Food items shall be received at the facility in the original, unopened, undamaged packaging and shall be properly protected from damage and potential contamination. Food shall be free from spoilage, filth, or other contamination and shall be safe for human consumption. The temperature of all potentially hazardous food shall be 45 F. or below or 140 F. or above at all times. Frozen food shall be kept frozen and should be stored at a temperature of 0 F. or below.

470 IAC 3-4.5-5(c) Refrigerator & Freezer - Refrigerator and Freezers. Enough conveniently located refrigeration facilities shall be provided to assure the maintenance of potentially hazardous food at required temperatures during storage. Refrigerators and freezers shall be in good condition, clean, and shall maintain the proper temperatures. Each compartment of the refrigerator and freezer shall be provided with an accurate thermometer, in good position for daily monitoring.

470 IAC 3-4.5-(e)(2) Cleaning - immersion for at least one (1) minute in clean water which is at a temperature of at least 75 F. and which contains an approved sanitizing agent at an effective concentration. Cleaned and sanitized equipment and utensils shall always be air dried, never towel dried. An alternative to dishwashing is the use of sturdy, all disposable, single-service articles and utensils. Reuse of single-service articles and utensils is prohibited. All permanent ware infant feeding

bottles and reusable nipples provided by the facility shall be washed and sanitized by the facility after each use as follows: Prewash in hot detergent water in a non-handwashing sink; scrub bottles and nipples inside and out with bottle and nipple brush; squeeze water through nipple hole during washing; and rinse well with clean, hot water. Boil in clear water bottles for five (5) minutes; nipples and caps, collars, and tongs for three (3) minutes; and air dry. Store each item separately in clean, covered, labeled container.

470 IAC 3-4.5-5(f) Food Storage - Storage. Containers and packages of food, cleaned and sanitized utensils, equipment, and single-service articles shall be stored at least six (6) inches above the floor in a clean, dry location in such a way that protects them from contamination, cleaning compounds, and toxic or hazardous materials. This does not apply to cased food packaged in waterproof containers.

470 IAC 3-4.5-5(g) Hand Washing Hygiene - Hygiene. A sink used exclusively for handwashing shall be located in the kitchen and supplied with soap and disposable towels from a dispenser. Persons who prepare, handle, and serve food shall thoroughly wash their hands with soap and water and use disposable towels for drying. Handwashing shall be done before starting work and as often as necessary to keep them clean. Persons who prepare and handle food shall wear clean, washable garments (aprons or smocks) and effective hair restraints. All food preparation and eating surfaces shall be sanitized before and after use.

470 IAC 3-4.5-6(a) Cribs - Cots and Cribs. Cots and cribs shall be constructed of sturdy, cleanable material and sanitized after each use; weekly sanitation of a cot or crib is acceptable if the cot or crib is used exclusively by the same child each day. Not more than one (1) child may occupy a crib or cot at any one (1) time. Linens and coverings shall be kept clean.

470 IAC 3-4.5-6(b) Handwashing - Handwashing. Adults and children shall wash their hands after using the toilet and before eating.

470 IAC 3-4.5-6(c) Ill Children - Ill Children. Ill children shall be kept separate from others and all surfaces and items with which a sick child has come in contact with shall be cleaned and sanitized after each use. Individual belongings shall be kept separate.

470 IAC 3-4.5-6(d) Diapering - Diapers. The diapering process shall be done on a table, in a clean and sanitary manner. The diaper changing surface shall be sanitized after each use and materials used for skin cleansing shall be discarded after each use into a tightly covered, easily sanitized container. Individuals responsible for diaper changing shall wash their hands after each diaper change.

IC12-17.2-6-11(a)(2) Immunizations - The parent or guardian of a child shall, when the child is enrolled in a child care ministry, provide the child care ministry with proof that the child has received the required immunizations against the following: Whooping cough.

IC12-17.2-6-14(1) Criminal History Check - The child care ministry must do the following: Conduct a criminal history check of the child care ministries employees and volunteers.

IC12-17.2-6-14(2)(c) Allegation of Child Abuse/Neglect - The child care ministry must do the following: is a person against whom an allegation of child abuse or neglect has been substantiated under IC 31-33.

IC12-17.2-6-7 Enrollment Records - The operator of a child care ministry registered under section 2 of this chapter shall provide a notice to the parent or guardian of a child enrolled in the child care ministry.

The notice must be signed by the parent or guardian when the child is enrolled in the child care ministry and must be kept on file at the child care ministry until two (2) years after the last day the child attends the child care ministry. This notice must be maintained by the child care ministry and made available to the division upon request.

Ministry CCDF Key Indicator Rules

IC 12-17.2-3.5-10(b)(1) and (2) Fire Drills - Each provider shall have monthly documented fire drills including date/time/weather condition/name of person conducting drill/full evacuation time and maintained for previous 12 months.

IC 12-17.2-3.5-6 TB Test - A provider shall have annual intradermal tuberculosis test and result. If medical exempt there must be an annual chest x-ray or a MD statement "free of TB Symptoms".

IC 12-17.2-3.5-8 CPR - Each childcare provider shall have annual certification in Child and Infant CPR. Each childcare provider shall have current certification in First Aid.

IC 12-17.2-3.5-5(a)(2) Running Water - The childcare facility shall have an approved source of running water from a sink that is in an area where childcare is provided.

IC 12-17.2-3.5-11(a) Hazard Free - A provider shall provide for a safe environment by ensuring that no conditions exist in or on the grounds of the facility where a provider operates a child care program that would endanger the health, safety, or welfare of the children, including ensuring that the following items are placed in areas that are inaccessible to children in the providers care: Fire arms, ammunition and other weapons Location. Poisons, chemicals, bleach cleaning materials and Medications Location.

IC 12-17.2-3.5-4.1 Child Abuse Registry - Each childcare provider has provided evidence that they have not been named in the State Central Registry IC31-33-18.

IC 12-17.2-3.5-12 Fingerprints - Each childcare provider, household member, employee, volunteer caregiver shall submit fingerprints for a national criminal history background check by the FBI or each childcare provider has local criminal check with documentation that national check is applied for.

IC 12-17.2-3.5-11.1 Immunizations - Each child has age appropriate immunizations including Varicella and Pneumococcal vaccines. Documentation includes: -Attendance records of all children in attendance. -Immunization records for each child (includes month, day and year given for each immunization and child's birth date. or A medical exempt statement from a physician OR a religious belief exemption statement from the parent.

IC 12-17.2-3.5-12.1 No Smoking/Drugs - A childcare provider shall have a written policy prohibiting: -use of tobacco, unintended use of toxic substances, use (homes) of alcohol; use or possession (centers & ministries) of alcohol; and use or possession of illegal substances in the facility where child care is operated when childcare is being provided.

IC 12-17.2-3.5-5.5(a) Supervision - All children in care are continually supervised by a caregiver (must be within sight and sound at all times).

IC 12-17.2-3.5-5.5(b) Infant/Toddler Training - A provider who cares for children who are less than 12 months of age shall complete a training course in safe sleep practices, approved by the Division. Ensure that all caregivers of children who are less than 12 months of age follow safe sleep practices.

IC 12-17.2-3.5-7(b) Discipline.

IC 12-17.2-3.5-8(b)(3) Child Abuse and Neglect.

IC 12-17.2-3.5-8(b)(4) Orientation.

IC 12-17.2-3.5-5(c)&(d) Transportation.

IC 12-17.2-3.5-5(c) Records.

LLEP Key Indicator Rules

IC 12-17.2-3.5-8 CPR Certification - Each childcare provider shall have annual certification in Child and Infant CPR. Each childcare provider shall have current certification in First Aid.

IC 12-17.2-3.5-4.1 State Registry - Each childcare provider has provided evidence that they have not been named in the State Central Registry IC31-33-18.

IC 12-17.2-3.5-12 Finger Prints - Each childcare provider, household member, employee, volunteer caregiver shall submit fingerprints for a national criminal history background check by the FBI or each childcare provider has local criminal check with documentation that national check is applied for.

IC 12-17.2-3.5-12.1 Drug Test - Each childcare provider shall have documentation of a Drug test and result does not show presence of illegal controlled substance(s). (Standard 5 or 8 panel urine test).

IC 12-17.2-3.5-5.5(a) Supervision - All children in care are continually supervised by a caregiver (must be within sight and sound at all times).

IC 12-17.2-3.5-7(b) Discipline.

IC 12-17.2-3.5-8(b)(3) Child Abuse and Neglect.

IC 12-17.2-3.5-8(c) Records.

IC 12-17.2-3.5-5(e) Daily Activities - Daily activities appropriate to the age, development needs, interests and number of children in the care of the provider.

IC 12-17.2-3.5-6 TB Test - A provider shall have annual intradermal tuberculosis test and result. If medical exempt there must be an annual chest x-ray or a MD statement "free of TB Symptoms".