

OREGON'S STEPPING STONES¹ RISK FACTORS ANALYSIS

The purpose of this analysis is to provide Oregon OCC with a basic risk factor analysis comparing its child care center rules to **Stepping Stones (SS)** standards. This analysis will delineate, based upon **Stepping Stones'** major content areas (chapters from **Caring for our Children (CFOC)**), where there may be gaps in their child care center rules.

This analysis is a summary look at the comparison between **Stepping Stones** and Oregon's Rules; it is now intended to be an in-depth crosswalk between the two sets of standards and rules. In order to do that type of analysis, **Fiene's Stepping Stones to Validate State Rules Template** (2013) is the suggested source to use.

Table 1 provides the comparisons between **Stepping Stones** and the Oregon Child Care Center Rules in which a search of the rules was done to determine if the specific **SS** standard was present or not. Every time the search contained a match, it was recorded as a "1". When there was no match, it was recorded as a "0".

Table 1 – Comparison of Stepping Stones (SS) Standards and Oregon Child Care Center Rules

<u>SS</u>	<u>RULES</u>	<u>PERCENT</u>	<u>CONTENT AREA/RISK FACTOR</u>
14	11	79	STAFFING
9	5	56	PROGRAM ACTIVITIES FOR HEALTHY DEVELOPMENT
25	16	64	HEALTH PROMOTION/PROTECTION
13	10	77	NUTRITION AND FOOD SERVICE
20	12	60	FACILITIES, SUPPLIES, EQUIPMENT, ENVIRON HEALTH
21	7	33	PLAY AREAS/PLAYGROUNDS AND TRANSPORTATION
10	1	10	INFECTIOUS DISEASES
<u>10</u>	<u>7</u>	<u>70</u>	<u>POLICIES</u>
122	69	56.125	TOTAL

Legend for Table 1:

Nominal scaling to determine if the Oregon CCC Rules have any reference to the specific SS3 Standard.

It is scored 1/0 where 1 = Present and 0 = Absent. Percent is the total number of "1". Higher the percent the better.

SS = STEPPING STONES STANDARDS

RULES = OREGON CHILD CARE CENTER RULES

PERCENT = RULES/SS

CONTENT = RISK FACTOR/SS/CFOC CHAPTER

This comparison was completed on the major chapter headings in *Stepping Stones* and *Caring for our Children* as delineated in the Content/Risk Factor Column in Table 1. The following table (Table 2) provides the detail of the contents of each content area/risk factor.

Table 2 – Major Content/Risk Factor Areas (1-8) and Specific Content for Each Area

1. STAFFING	<ul style="list-style-type: none"> A. CHILD:STAFF RATIO AND GROUP SIZE B. RECRUITMENT AND BACKGROUND SCREENING C. DIRECTOR'S QUALIFICATIONS D. TEACHER'S QUALIFICATIONS E. PRE-SERVICE TRAINING F. ORIENTATION TRAINING G. FIRST AID AND CPR TRAINING H. STAFF HEALTH
2. PROGRAM ACTIVITIES FOR HEALTHY DEVELOPMENT	<ul style="list-style-type: none"> A. PROGRAM ACTIVITIES FOR INFANTS, TODDLERS, PRESCHOOLERS, AND SCHOOL AGE CHILDREN B. SUPERVISION AND DISCIPLINE C. HEALTH INFORMATION SHARING D. HEALTH EDUCATION FOR CHILDREN E. HEALTH EDUCATION FOR STAFF F. HEALTH EDUCATION FOR PARENTS
3. HEALTH PROMOTION AND PROTECTION	<ul style="list-style-type: none"> A. DAILY HEALTH CHECK B. ROUTINE HEALTH SUPERVISION C. PHYSICAL ACTIVITY AND LIMITING SCREEN TIME D. SAFE SLEEP E. ORAL HEALTH F. DIAPERING AND CHANGING SOILED CLOTHING G. HAND HYGIENE H. EXPOSURE TO BODY FLUIDS I. EMERGENCY PROCEDURES J. CHILD ABUSE AND NEGLECT K. INCLUSION/EXCLUSION DUE TO ILLNESS L. CARING FOR CHILDREN WHO ARE ILL M. MEDICATIONS
4. NUTRITION AND FOOD SERVICE	<ul style="list-style-type: none"> A. MEAL SERVICE, SEATING, SUPERVISION B. FOOD BROUGHT FROM HOME C. KITCHEN AND EQUIPMENT D. FOOD SAFETY

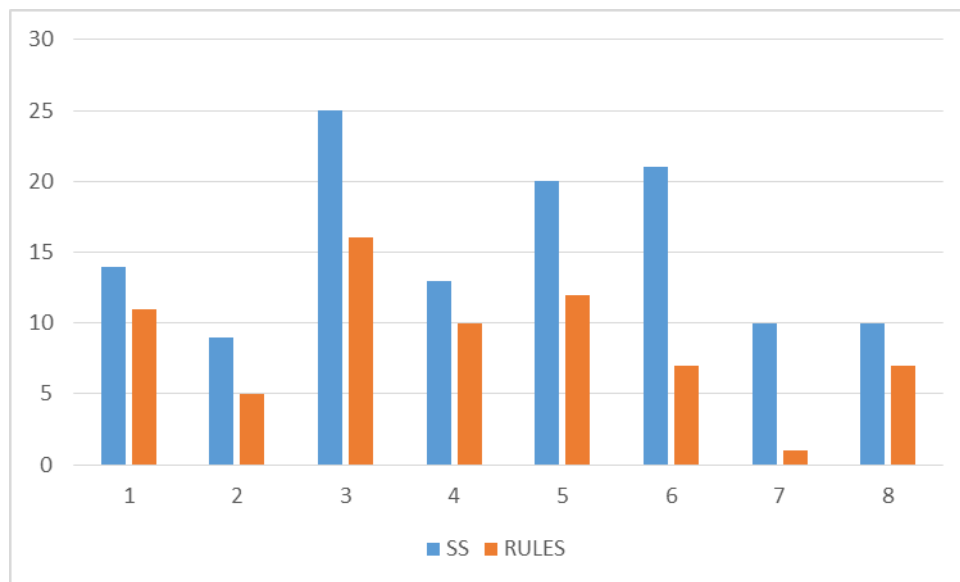
	<ul style="list-style-type: none"> E. MEALS FROM OUTSIDE VENDORS OR CENTRAL KITCHEN F. NUTRITION LEARNING EXPERIENCES FOR CHILDREN G. NUTRITION EDUCATION FOR PARENTS
5. FACILITIES, SUPPLIES, EQUIPMENT, AND ENVIRONMENTAL HEALTH	<ul style="list-style-type: none"> A. GENERAL LOCATION, LAYOUT, AND CONSTRUCTION OF THE FACILITY B. SPACE PER CHILD C. EXITS D. STEPS AND STAIRS E. EXTERIOR AREAS F. VENTILATION, HEATING, COOLING, AND HOT WATER G. LIGHTING H. NOISE I. ELECTRICAL FIXTURES AND OUTLETS J. FIRE WARNING SYSTEMS K. WATER SUPPLY AND PLUMBING L. SEWAGE AND GARBAGE M. INTEGRATED PEST MANAGEMENT N. PREVENTION AND MANAGEMENT OF TOXIC SUBSTANCES O. TOILET AND HANDWASHING AREAS P. DIAPER CHANGING AREAS Q. SLEEP AND REST AREAS
6. PLAY AREAS/PLAYGROUNDS AND TRANSPORTATION	<ul style="list-style-type: none"> A. PLAYGROUND SIZE AND LOCATION B. USE ZONES AND CLEARANCE REQUIREMENTS C. PLAY AREA AND PLAYGROUND SURFACING D. INSPECTION OF PLAY AREAS AND EQUIPMENT E. ACCESS TO AND SAFETY AROUND BODIES OF WATER F. POOL EQUIPMENT AND MAINTENANCE G. WATER QUALITY OF POOLS H. TRANSPORTATION SAFETY
7. INFECTIOUS DISEASES	<ul style="list-style-type: none"> A. HOW INFECTIONS SPREAD B. IMMUNIZATIONS C. RESPIRATORY TRACT INFECTIONS D. ENTERIC (DIARRHEAL) INFECTIONS AND HEPATITIS A VIRUS (HAV) E. SKIN AND MUCOUS MEMBRANE INFECTIONS

	F. BLOODBORNE INFECTIONS G. HERPES VIRUSES H. INTERACTION WITH STATE OR LOCAL HEALTH DEPARTMENTS
8. POLICIES	A. HEALTH POLICIES B. EMERGENCY/SECURITY POLICIES AND PLANS C. TRANSPORTATION POLICIES D. PLAY AREA POLICIES E. FACILITY RECORDS/REPORTS F. CHILD RECORDS G. STAFF RECORDS

Table 2 provides you with the specific content as it relates to the risk factors. Figures 1 and 2 as well as Table 3 will provide the comparison between **SS** standards and Oregon's child care center rules by these content areas/risk factors.

Figure 1 does this comparison by listing for each content area/risk factor the frequency count where there is a match between rules and standards.

Figure 1 – Comparing Stepping Stones (SS) Standards and Oregon's Child Care Center Rules



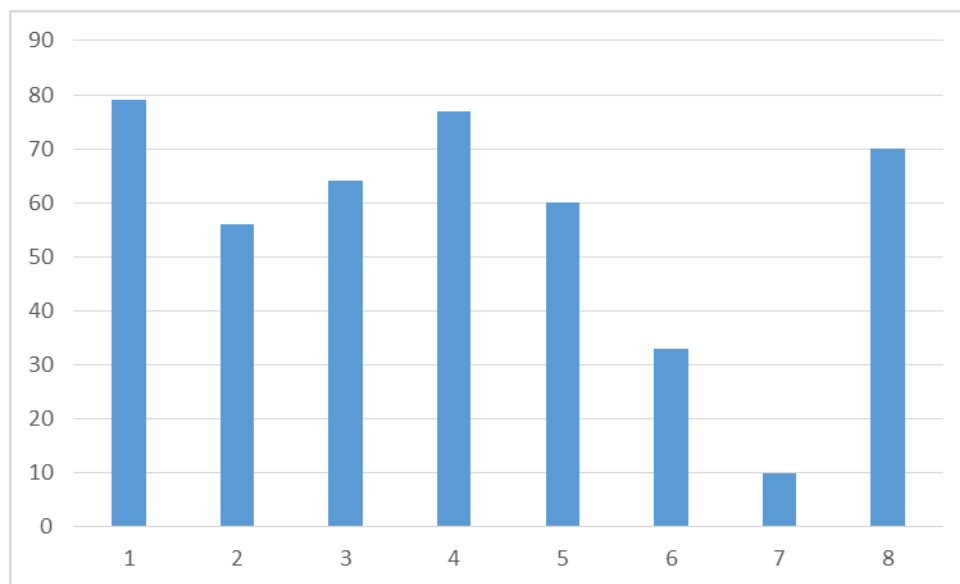
Legend for Figure 1:

- 1 = STAFFING
- 2 = PROGRAM ACTIVITIES FOR HEALTHY DEVELOPMENT
- 3 = HEALTH PROMOTION/PROTECTION
- 4 = NUTRITION AND FOOD SERVICE

- 5 = FACILITIES, SUPPLIES, EQUIPMENT, ENVIRON HEALTH
- 6 = PLAY AREAS/PLAYGROUNDS AND TRANSPORTATION
- 7 = INFECTIOUS DISEASES
- 8 = POLICIES

Figure 2 takes the data from Table 1 and Figure 1 and expresses the content areas/risk factors in the form of percents in which the percents represent the number of times the Oregon child care center rules and the *Stepping Stones* standards match.

Figure 2 – Percent of *Stepping Stones* Standards in Oregon's Child Care Center Rules



Legend for Figure 1:

- 1 = STAFFING
- 2 = PROGRAM ACTIVITIES FOR HEALTHY DEVELOPMENT
- 3 = HEALTH PROMOTION/PROTECTION
- 4 = NUTRITION AND FOOD SERVICE
- 5 = FACILITIES, SUPPLIES, EQUIPMENT, ENVIRON HEALTH
- 6 = PLAY AREAS/PLAYGROUNDS AND TRANSPORTATION
- 7 = INFECTIOUS DISEASES
- 8 = POLICIES

It is evident from Table 1 and Figures 1 and 2 that the two areas where the greatest gap between the *Stepping Stones* standards and Oregon's child care center rules is in the Infectious Diseases and Play Areas/Playgrounds and Transportation content areas/risk factors with a match rate of 10% and 33% respectively. The highest match rates are with the Staffing (79%) and Nutrition & Food Service (77%).

Based upon the above results there are some recommendations to be made where Oregon Office of Child Care staff may want to focus their attention for future rule formulation in the infectious diseases and the play area/playgrounds & transportation content areas.

Notes:

1 The reason for using *Stepping Stones* rather than *Caring for our Children* is that *Stepping Stones* are the selected standards from *CFOC* that place children at greatest risk of mortality and morbidity if the standards are not complied with.

For additional information regarding this report, please contact:

Richard Fiene, Ph.D., President, Research Institute for Key Indicators LLC (RIKI)

41 Grandview Avenue, Middletown, Pennsylvania 17057

Phone/Fax: 717-944-5868; Mobile: 717-598-8908

Website: rikinstitute.wikispaces.com

Email: RIKI.Institute@gmail.com

