



DR RICHARD FIENE, RESEARCH PSYCHOLOGIST
RESEARCH INSTITUTE FOR KEY INDICATORS, LLC (RIKI)
305 TEMPLAR DRIVE
ELIZABETHTOWN, PENNSYLVANIA 17022
MOBILE 717-598-8908
FIENE@RIKINSTITUTE.COM
RIKINSTITUTE.COM

Data Distributions for Licensing and Quality Data

Richard Fiene, Ph.D.

November 2017

This technical research note contains examples from various states and nationally of data distributions (frequencies and histograms) depicting how licensing and program quality (ERS, CLASS) data compare to each other.

The data distributions clearly demonstrate how skewed licensing data ($s = 2.22$) are in comparison to program quality data as represented by the ERS and CLASS scales ($s = .26$). These data are presented for their historical and descriptive research significance. Each of the data sets were part of larger studies comparing licensing and quality of various child care center and home based programs across the country.

GET

GET FILE="C:\Documents and Settings\Judy\My Documents\RIKI\DATA\2OHS
\OHS.sav".

FREQUENCIES

FREQUENCIES

/VARIABLES= numfindingcount

/FORMAT=AVALUE TABLE

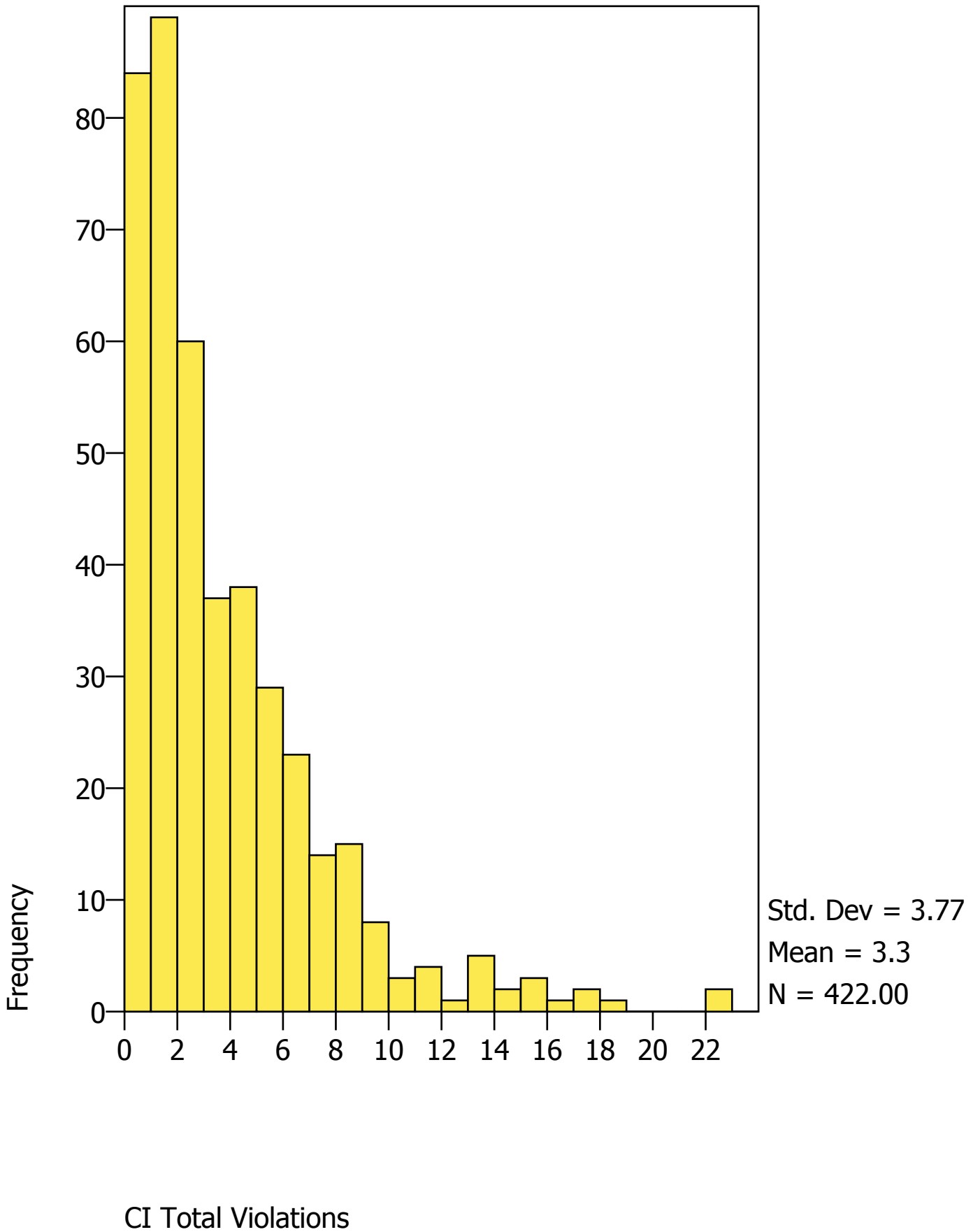
/STATISTICS=NONE

/HISTOGRAM=NONORMAL.

CI Total Violations

<i>Value Label</i>	<i>Value</i>	<i>Frequency</i>	<i>Percent</i>	<i>Valid Percent</i>	<i>Cum Percent</i>
	0	84	19.91	19.91	19.91
	1	89	21.09	21.09	41.00
	2	60	14.22	14.22	55.21
	3	37	8.77	8.77	63.98
	4	38	9.00	9.00	72.99
	5	29	6.87	6.87	79.86
	6	23	5.45	5.45	85.31
	7	14	3.32	3.32	88.63
	8	15	3.55	3.55	92.18
	9	8	1.90	1.90	94.08
	10	3	.71	.71	94.79
	11	4	.95	.95	95.73
	12	1	.24	.24	95.97
	13	5	1.18	1.18	97.16
	14	2	.47	.47	97.63
	15	3	.71	.71	98.34
	16	1	.24	.24	98.58
	17	2	.47	.47	99.05
	18	1	.24	.24	99.29
	22	2	.47	.47	99.76
	24	1	.24	.24	100.00
	<i>Total</i>	422	100.0	100.0	

HISTOGRAM



GET

GET FILE="C:\Documents and Settings\Judy\My Documents\RIKI\DATA\GA\GA
CCC.sav".

FREQUENCIES

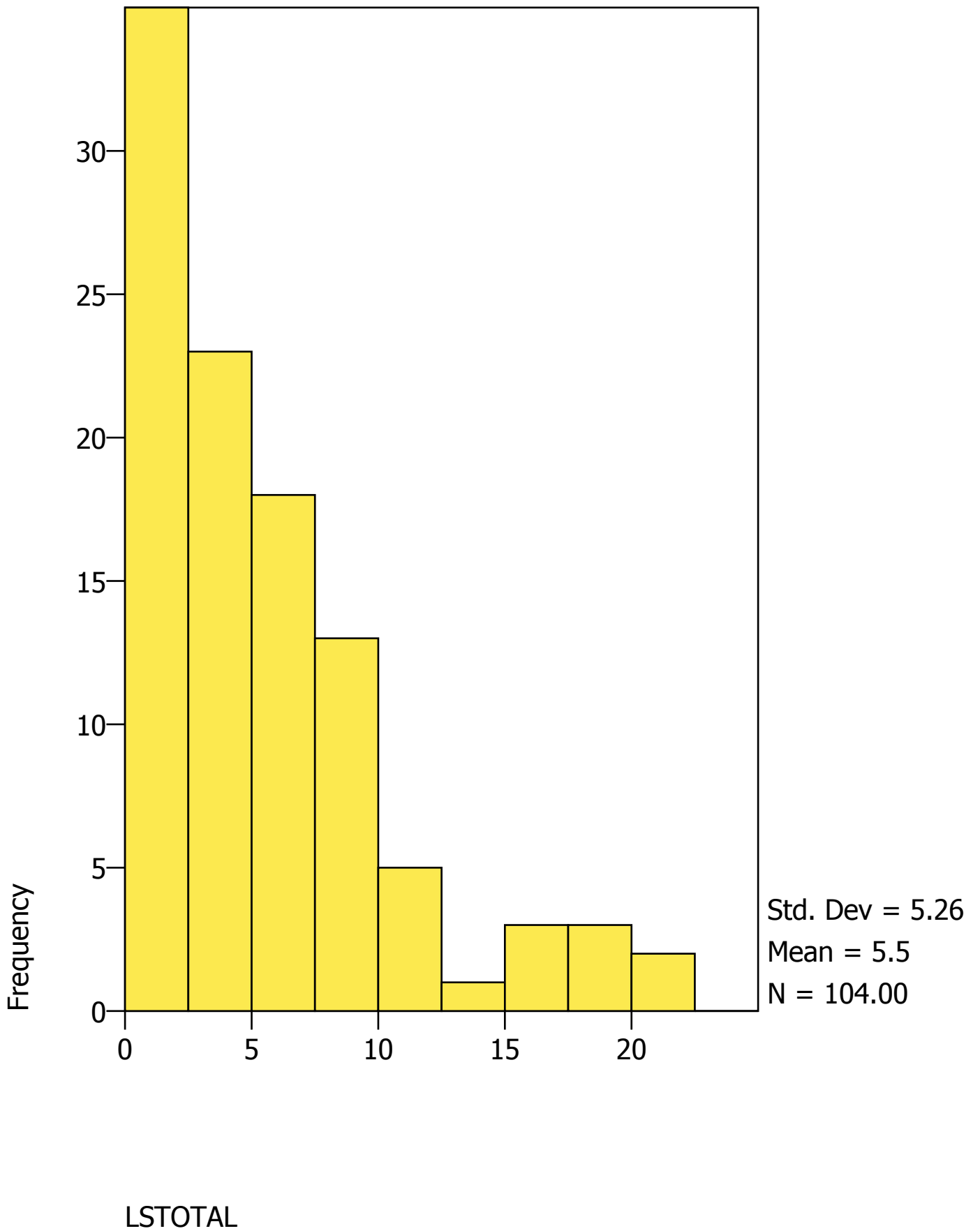
FREQUENCIES

/VARIABLES= LSTOTAL
/FORMAT=AVALUE TABLE
/STATISTICS=NONE
/HISTOGRAM=NONORMAL.

LSTOTAL

<i>Value Label</i>	<i>Value</i>	<i>Frequency</i>	<i>Percent</i>	<i>Valid Percent</i>	<i>Cum Percent</i>
	.00	15	14.42	14.42	14.42
	1.00	7	6.73	6.73	21.15
	2.00	13	12.50	12.50	33.65
	3.00	9	8.65	8.65	42.31
	4.00	14	13.46	13.46	55.77
	5.00	5	4.81	4.81	60.58
	6.00	7	6.73	6.73	67.31
	7.00	6	5.77	5.77	73.08
	8.00	8	7.69	7.69	80.77
	9.00	5	4.81	4.81	85.58
	11.00	2	1.92	1.92	87.50
	12.00	3	2.88	2.88	90.38
	13.00	1	.96	.96	91.35
	15.00	1	.96	.96	92.31
	16.00	2	1.92	1.92	94.23
	18.00	1	.96	.96	95.19
	19.00	2	1.92	1.92	97.12
	20.00	2	1.92	1.92	99.04
	25.00	1	.96	.96	100.00
	<i>Total</i>	104	100.0	100.0	

HISTOGRAM



GET

GET FILE="C:\Documents and Settings\Judy\My Documents\RIKI\DATA\GA\GA
FCC.sav".

FREQUENCIES

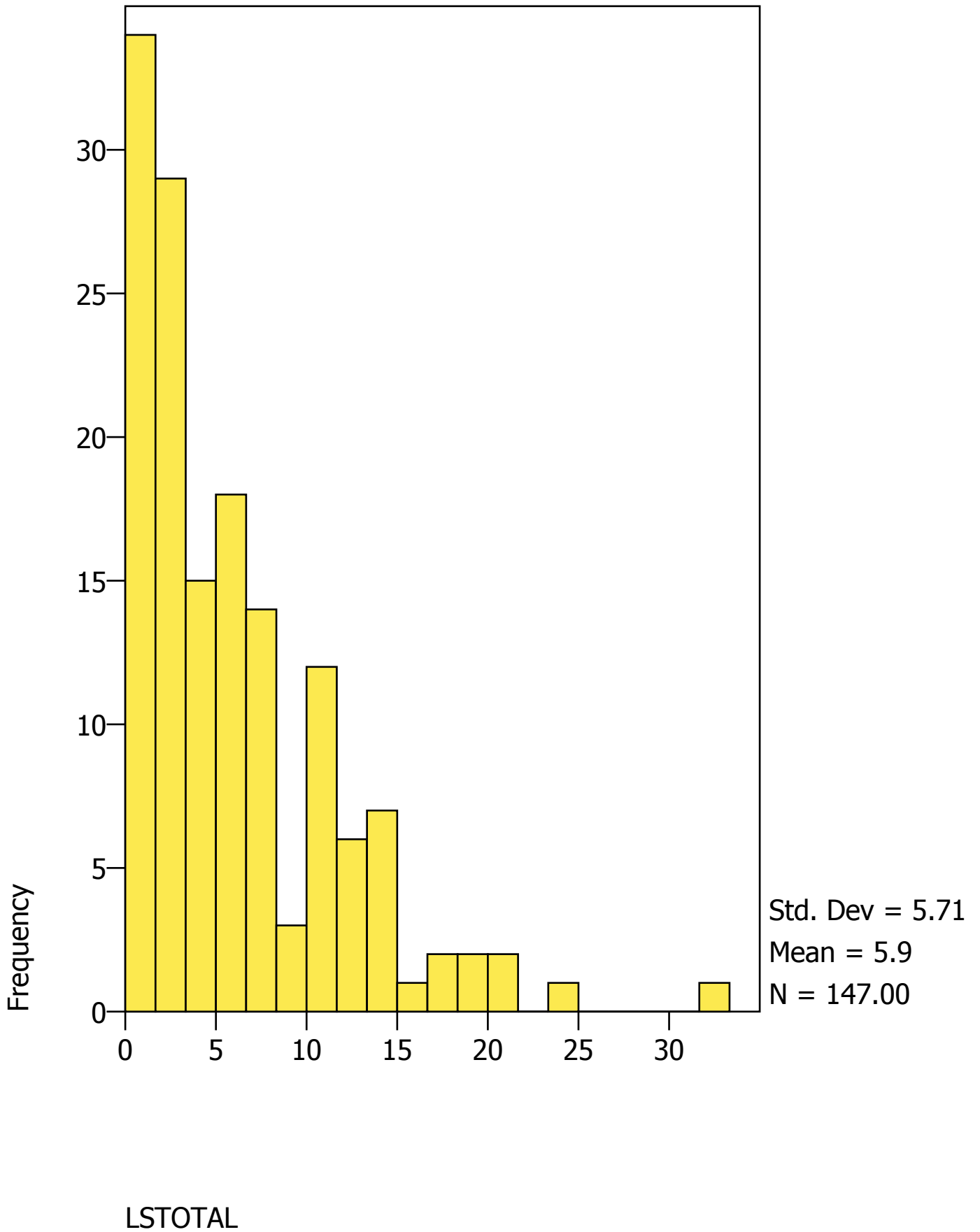
FREQUENCIES

/VARIABLES= LSTOTAL
/FORMAT=AVALUE TABLE
/STATISTICS=NONE
/HISTOGRAM=NONORMAL.

LSTOTAL

<i>Value Label</i>	<i>Value</i>	<i>Frequency</i>	<i>Percent</i>	<i>Valid Percent</i>	<i>Cum Percent</i>
	.00	23	15.65	15.65	15.65
	1.00	11	7.48	7.48	23.13
	2.00	15	10.20	10.20	33.33
	3.00	14	9.52	9.52	42.86
	4.00	15	10.20	10.20	53.06
	5.00	8	5.44	5.44	58.50
	6.00	10	6.80	6.80	65.31
	7.00	8	5.44	5.44	70.75
	8.00	6	4.08	4.08	74.83
	9.00	3	2.04	2.04	76.87
	10.00	9	6.12	6.12	82.99
	11.00	3	2.04	2.04	85.03
	12.00	3	2.04	2.04	87.07
	13.00	3	2.04	2.04	89.12
	14.00	5	3.40	3.40	92.52
	15.00	2	1.36	1.36	93.88
	16.00	1	.68	.68	94.56
	17.00	1	.68	.68	95.24
	18.00	1	.68	.68	95.92
	19.00	2	1.36	1.36	97.28
	21.00	2	1.36	1.36	98.64
	24.00	1	.68	.68	99.32
	33.00	1	.68	.68	100.00
	<i>Total</i>	147	100.0	100.0	

HISTOGRAM



GET

GET FILE="C:\Documents and Settings\Judy\My Documents\RIKI\DATA\3cWASH
\SPSS\WASH TEST4 QRIS N1-3 ANOVA CCC.sav".

FREQUENCIES

FREQUENCIES

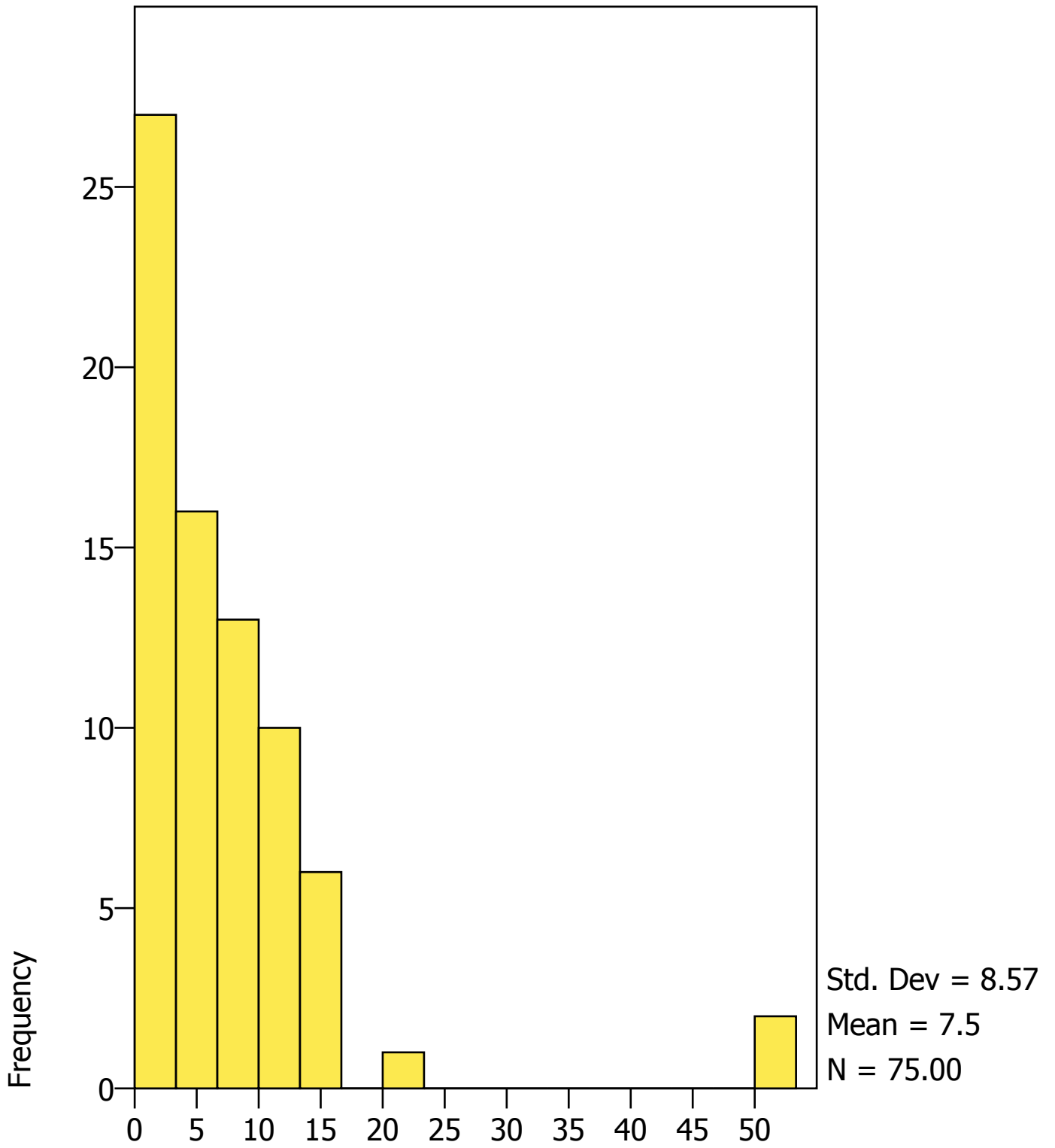
/VARIABLES= NC13
/FORMAT=AVALUE TABLE
/STATISTICS=NONE
/HISTOGRAM=NONORMAL.

NC13

<i>Value Label</i>	<i>Value</i>	<i>Frequency</i>	<i>Percent</i>	<i>Valid Percent</i>	<i>Cum Percent</i>
	1.00	1	1.33	1.33	1.33
	1.33	4	5.33	5.33	6.67
	1.67	6	8.00	8.00	14.67
	2.00	3	4.00	4.00	18.67
	2.33	4	5.33	5.33	24.00
	2.67	5	6.67	6.67	30.67
	3.00	4	5.33	5.33	36.00
	3.33	1	1.33	1.33	37.33
	4.00	1	1.33	1.33	38.67
	4.33	5	6.67	6.67	45.33
	4.67	2	2.67	2.67	48.00
	5.67	3	4.00	4.00	52.00
	6.00	3	4.00	4.00	56.00
	6.33	1	1.33	1.33	57.33
	6.67	1	1.33	1.33	58.67
	7.00	4	5.33	5.33	64.00
	7.33	1	1.33	1.33	65.33
	7.67	2	2.67	2.67	68.00
	8.67	1	1.33	1.33	69.33
	9.00	1	1.33	1.33	70.67
	9.33	2	2.67	2.67	73.33
	9.67	1	1.33	1.33	74.67
	10.00	2	2.67	2.67	77.33
	10.67	2	2.67	2.67	80.00
	11.00	1	1.33	1.33	81.33
	11.33	1	1.33	1.33	82.67
	11.67	1	1.33	1.33	84.00
	12.00	2	2.67	2.67	86.67
	12.67	1	1.33	1.33	88.00
	13.33	1	1.33	1.33	89.33

<i>Value Label</i>	<i>Value</i>	<i>Frequency</i>	<i>Percent</i>	<i>Valid Percent</i>	<i>Cum Percent</i>
	13.67	1	1.33	1.33	90.67
	14.00	2	2.67	2.67	93.33
	15.33	1	1.33	1.33	94.67
	16.33	1	1.33	1.33	96.00
	22.67	1	1.33	1.33	97.33
	50.67	1	1.33	1.33	98.67
	52.00	1	1.33	1.33	100.00
	<i>Total</i>	75	100.0	100.0	

HISTOGRAM



NC13

GET

GET FILE="C:\Documents and Settings\Judy\My Documents\RIKI\DATA\3cWASH
\SPSS\WASH TEST5a FCC 2-4.sav".

FREQUENCIES

FREQUENCIES

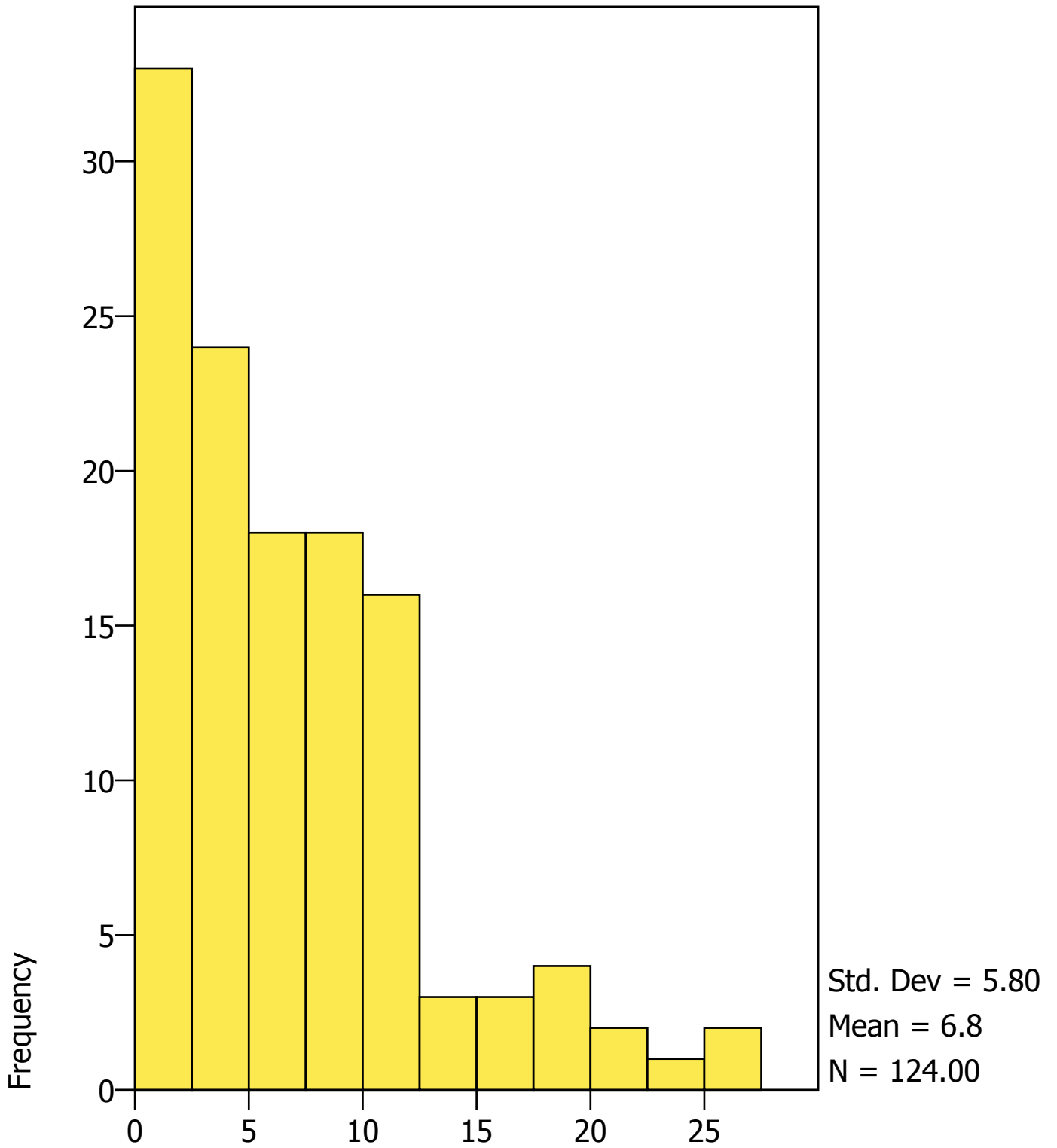
/VARIABLES= NC13
/FORMAT=AVALUE TABLE
/STATISTICS=NONE
/HISTOGRAM=NONORMAL.

NC13

<i>Value Label</i>	<i>Value</i>	<i>Frequency</i>	<i>Percent</i>	<i>Valid Percent</i>	<i>Cum Percent</i>
	.00	7	5.65	5.65	5.65
	.33	3	2.42	2.42	8.06
	.67	3	2.42	2.42	10.48
	1.00	6	4.84	4.84	15.32
	1.33	5	4.03	4.03	19.35
	1.67	2	1.61	1.61	20.97
	2.00	2	1.61	1.61	22.58
	2.33	5	4.03	4.03	26.61
	2.67	5	4.03	4.03	30.65
	3.00	3	2.42	2.42	33.06
	3.33	2	1.61	1.61	34.68
	3.67	3	2.42	2.42	37.10
	4.00	6	4.84	4.84	41.94
	4.33	3	2.42	2.42	44.35
	4.67	2	1.61	1.61	45.97
	5.00	1	.81	.81	46.77
	5.67	6	4.84	4.84	51.61
	6.00	6	4.84	4.84	56.45
	6.67	2	1.61	1.61	58.06
	7.33	3	2.42	2.42	60.48
	7.67	4	3.23	3.23	63.71
	8.33	3	2.42	2.42	66.13
	8.67	1	.81	.81	66.94
	9.00	2	1.61	1.61	68.55
	9.33	2	1.61	1.61	70.16
	9.67	6	4.84	4.84	75.00
	10.00	3	2.42	2.42	77.42
	10.33	3	2.42	2.42	79.84
	10.67	2	1.61	1.61	81.45
	11.00	1	.81	.81	82.26

<i>Value Label</i>	<i>Value</i>	<i>Frequency</i>	<i>Percent</i>	<i>Valid Percent</i>	<i>Cum Percent</i>
	11.33	3	2.42	2.42	84.68
	11.67	1	.81	.81	85.48
	12.33	3	2.42	2.42	87.90
	12.67	2	1.61	1.61	89.52
	13.67	1	.81	.81	90.32
	15.00	3	2.42	2.42	92.74
	18.00	2	1.61	1.61	94.35
	18.33	1	.81	.81	95.16
	19.67	1	.81	.81	95.97
	20.67	1	.81	.81	96.77
	22.00	1	.81	.81	97.58
	24.33	1	.81	.81	98.39
	25.67	1	.81	.81	99.19
	27.33	1	.81	.81	100.00
	<i>Total</i>	124	100.0	100.0	

HISTOGRAM



NC13

GET

GET FILE="C:\Documents and Settings\Judy\My Documents\RIKI\DATA\2OHS
\OHS.sav".

FREQUENCIES

FREQUENCIES

/VARIABLES= CLASSTOT
/FORMAT=AVALUE TABLE
/STATISTICS=NONE
/HISTOGRAM=NONORMAL.

CLASS TOTAL OF THREE SCALES

<i>Value Label</i>	<i>Value</i>	<i>Frequency</i>	<i>Percent</i>	<i>Valid Percent</i>	<i>Cum Percent</i>
	8.87	1	.24	.26	.26
	9.46	1	.24	.26	.52
	10.00	2	.47	.52	1.04
	10.92	1	.24	.26	1.30
	10.94	1	.24	.26	1.56
	11.00	1	.24	.26	1.82
	11.27	1	.24	.26	2.08
	11.41	1	.24	.26	2.34
	11.59	1	.24	.26	2.60
	11.88	1	.24	.26	2.86
	11.96	1	.24	.26	3.12
	12.08	1	.24	.26	3.39
	12.11	1	.24	.26	3.65
	12.11	1	.24	.26	3.91
	12.14	1	.24	.26	4.17
	12.16	1	.24	.26	4.43
	12.21	1	.24	.26	4.69
	12.23	1	.24	.26	4.95
	12.24	1	.24	.26	5.21
	12.29	1	.24	.26	5.47
	12.33	1	.24	.26	5.73
	12.40	1	.24	.26	5.99
	12.44	1	.24	.26	6.25
	12.47	1	.24	.26	6.51
	12.47	1	.24	.26	6.77
	12.49	2	.47	.52	7.29
	12.53	1	.24	.26	7.55
	12.57	1	.24	.26	7.81
	12.62	1	.24	.26	8.07
	12.64	1	.24	.26	8.33

<i>Value Label</i>	<i>Value</i>	<i>Frequency</i>	<i>Percent</i>	<i>Valid Percent</i>	<i>Cum Percent</i>
	12.70	1	.24	.26	8.59
	12.73	1	.24	.26	8.85
	12.76	1	.24	.26	9.11
	12.78	1	.24	.26	9.38
	12.78	1	.24	.26	9.64
	12.80	1	.24	.26	9.90
	12.83	1	.24	.26	10.16
	12.85	1	.24	.26	10.42
	12.86	1	.24	.26	10.68
	12.88	1	.24	.26	10.94
	12.89	1	.24	.26	11.20
	12.90	1	.24	.26	11.46
	12.93	1	.24	.26	11.72
	12.95	1	.24	.26	11.98
	12.95	1	.24	.26	12.24
	12.96	1	.24	.26	12.50
	13.02	1	.24	.26	12.76
	13.03	1	.24	.26	13.02
	13.03	1	.24	.26	13.28
	13.04	1	.24	.26	13.54
	13.06	1	.24	.26	13.80
	13.08	1	.24	.26	14.06
	13.08	1	.24	.26	14.32
	13.10	1	.24	.26	14.58
	13.11	1	.24	.26	14.84
	13.13	1	.24	.26	15.10
	13.13	1	.24	.26	15.36
	13.13	1	.24	.26	15.62
	13.13	1	.24	.26	15.89
	13.14	1	.24	.26	16.15
	13.18	1	.24	.26	16.41
	13.18	1	.24	.26	16.67
	13.19	2	.47	.52	17.19
	13.19	1	.24	.26	17.45
	13.19	1	.24	.26	17.71
	13.19	1	.24	.26	17.97
	13.20	1	.24	.26	18.23
	13.22	1	.24	.26	18.49
	13.22	1	.24	.26	18.75
	13.23	1	.24	.26	19.01
	13.23	1	.24	.26	19.27
	13.23	1	.24	.26	19.53
	13.24	1	.24	.26	19.79
	13.24	1	.24	.26	20.05
	13.30	1	.24	.26	20.31
	13.31	1	.24	.26	20.57

<i>Value Label</i>	<i>Value</i>	<i>Frequency</i>	<i>Percent</i>	<i>Valid Percent</i>	<i>Cum Percent</i>
	13.32	1	.24	.26	20.83
	13.35	1	.24	.26	21.09
	13.35	1	.24	.26	21.35
	13.35	1	.24	.26	21.61
	13.35	1	.24	.26	21.88
	13.35	1	.24	.26	22.14
	13.36	1	.24	.26	22.40
	13.39	1	.24	.26	22.66
	13.41	1	.24	.26	22.92
	13.42	1	.24	.26	23.18
	13.43	1	.24	.26	23.44
	13.43	1	.24	.26	23.70
	13.45	1	.24	.26	23.96
	13.46	1	.24	.26	24.22
	13.47	1	.24	.26	24.48
	13.50	1	.24	.26	24.74
	13.52	1	.24	.26	25.00
	13.52	1	.24	.26	25.26
	13.52	1	.24	.26	25.52
	13.55	1	.24	.26	25.78
	13.58	1	.24	.26	26.04
	13.59	1	.24	.26	26.30
	13.60	1	.24	.26	26.56
	13.62	1	.24	.26	26.82
	13.62	1	.24	.26	27.08
	13.63	1	.24	.26	27.34
	13.64	1	.24	.26	27.60
	13.64	1	.24	.26	27.86
	13.66	1	.24	.26	28.13
	13.72	1	.24	.26	28.39
	13.73	1	.24	.26	28.65
	13.73	1	.24	.26	28.91
	13.75	1	.24	.26	29.17
	13.77	1	.24	.26	29.43
	13.79	1	.24	.26	29.69
	13.80	1	.24	.26	29.95
	13.82	1	.24	.26	30.21
	13.83	1	.24	.26	30.47
	13.83	1	.24	.26	30.73
	13.83	1	.24	.26	30.99
	13.83	1	.24	.26	31.25
	13.84	1	.24	.26	31.51
	13.85	1	.24	.26	31.77
	13.85	1	.24	.26	32.03
	13.85	1	.24	.26	32.29
	13.87	1	.24	.26	32.55

<i>Value Label</i>	<i>Value</i>	<i>Frequency</i>	<i>Percent</i>	<i>Valid Percent</i>	<i>Cum Percent</i>
	13.87	1	.24	.26	32.81
	13.88	1	.24	.26	33.07
	13.88	1	.24	.26	33.33
	13.89	1	.24	.26	33.59
	13.89	1	.24	.26	33.85
	13.89	1	.24	.26	34.11
	13.90	1	.24	.26	34.38
	13.90	1	.24	.26	34.64
	13.91	1	.24	.26	34.90
	13.92	1	.24	.26	35.16
	13.92	1	.24	.26	35.42
	13.92	1	.24	.26	35.68
	13.94	1	.24	.26	35.94
	13.95	1	.24	.26	36.20
	13.96	1	.24	.26	36.46
	13.96	1	.24	.26	36.72
	13.97	1	.24	.26	36.98
	13.97	1	.24	.26	37.24
	13.98	1	.24	.26	37.50
	13.98	1	.24	.26	37.76
	13.98	1	.24	.26	38.02
	14.00	1	.24	.26	38.28
	14.01	1	.24	.26	38.54
	14.02	1	.24	.26	38.80
	14.04	1	.24	.26	39.06
	14.05	1	.24	.26	39.32
	14.07	1	.24	.26	39.58
	14.07	1	.24	.26	39.84
	14.08	1	.24	.26	40.10
	14.09	1	.24	.26	40.36
	14.09	1	.24	.26	40.62
	14.09	1	.24	.26	40.89
	14.10	1	.24	.26	41.15
	14.11	1	.24	.26	41.41
	14.11	1	.24	.26	41.67
	14.12	1	.24	.26	41.93
	14.13	1	.24	.26	42.19
	14.13	1	.24	.26	42.45
	14.13	1	.24	.26	42.71
	14.14	1	.24	.26	42.97
	14.14	1	.24	.26	43.23
	14.14	1	.24	.26	43.49
	14.15	1	.24	.26	43.75
	14.16	1	.24	.26	44.01
	14.17	1	.24	.26	44.27
	14.17	1	.24	.26	44.53

<i>Value Label</i>	<i>Value</i>	<i>Frequency</i>	<i>Percent</i>	<i>Valid Percent</i>	<i>Cum Percent</i>
	14.17	1	.24	.26	44.79
	14.18	1	.24	.26	45.05
	14.19	1	.24	.26	45.31
	14.19	1	.24	.26	45.57
	14.19	1	.24	.26	45.83
	14.22	1	.24	.26	46.09
	14.22	1	.24	.26	46.35
	14.23	1	.24	.26	46.61
	14.24	1	.24	.26	46.87
	14.24	1	.24	.26	47.14
	14.25	1	.24	.26	47.40
	14.26	1	.24	.26	47.66
	14.27	1	.24	.26	47.92
	14.27	1	.24	.26	48.18
	14.27	1	.24	.26	48.44
	14.29	1	.24	.26	48.70
	14.31	1	.24	.26	48.96
	14.31	1	.24	.26	49.22
	14.31	1	.24	.26	49.48
	14.32	1	.24	.26	49.74
	14.33	1	.24	.26	50.00
	14.33	1	.24	.26	50.26
	14.34	1	.24	.26	50.52
	14.37	1	.24	.26	50.78
	14.37	1	.24	.26	51.04
	14.38	1	.24	.26	51.30
	14.41	1	.24	.26	51.56
	14.42	1	.24	.26	51.82
	14.42	1	.24	.26	52.08
	14.42	1	.24	.26	52.34
	14.43	1	.24	.26	52.60
	14.44	1	.24	.26	52.86
	14.44	1	.24	.26	53.12
	14.46	1	.24	.26	53.39
	14.46	1	.24	.26	53.65
	14.46	1	.24	.26	53.91
	14.47	1	.24	.26	54.17
	14.47	1	.24	.26	54.43
	14.48	1	.24	.26	54.69
	14.49	1	.24	.26	54.95
	14.50	1	.24	.26	55.21
	14.50	1	.24	.26	55.47
	14.51	1	.24	.26	55.73
	14.51	1	.24	.26	55.99
	14.52	1	.24	.26	56.25
	14.54	1	.24	.26	56.51

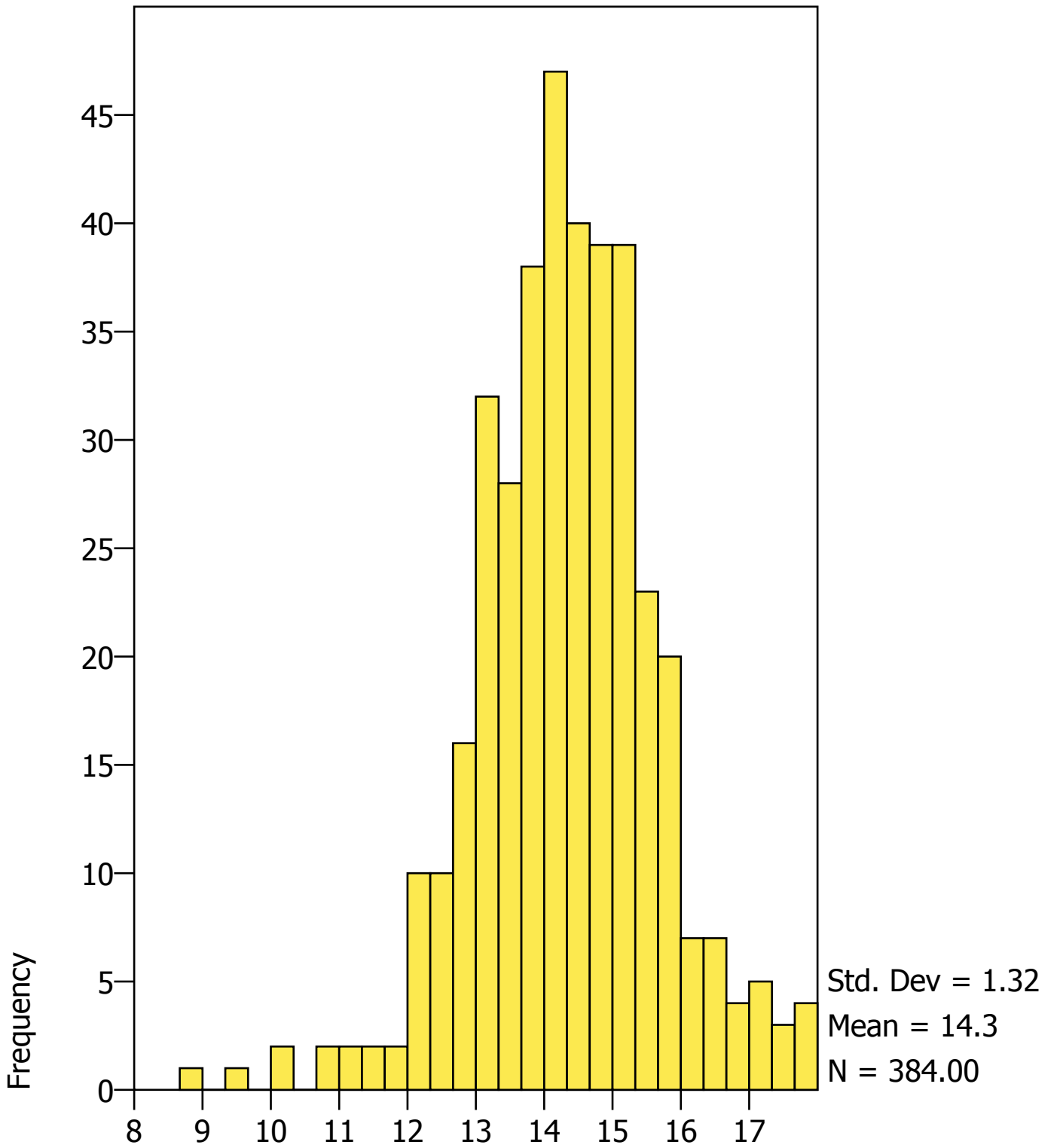
<i>Value Label</i>	<i>Value</i>	<i>Frequency</i>	<i>Percent</i>	<i>Valid Percent</i>	<i>Cum Percent</i>
	14.54	1	.24	.26	56.77
	14.55	1	.24	.26	57.03
	14.56	1	.24	.26	57.29
	14.57	1	.24	.26	57.55
	14.61	1	.24	.26	57.81
	14.61	1	.24	.26	58.07
	14.61	1	.24	.26	58.33
	14.62	2	.47	.52	58.85
	14.63	1	.24	.26	59.11
	14.64	1	.24	.26	59.37
	14.64	1	.24	.26	59.64
	14.64	1	.24	.26	59.90
	14.65	1	.24	.26	60.16
	14.65	1	.24	.26	60.42
	14.66	1	.24	.26	60.68
	14.69	1	.24	.26	60.94
	14.69	1	.24	.26	61.20
	14.70	1	.24	.26	61.46
	14.71	1	.24	.26	61.72
	14.71	1	.24	.26	61.98
	14.73	1	.24	.26	62.24
	14.73	1	.24	.26	62.50
	14.73	1	.24	.26	62.76
	14.74	1	.24	.26	63.02
	14.75	1	.24	.26	63.28
	14.75	1	.24	.26	63.54
	14.76	1	.24	.26	63.80
	14.76	1	.24	.26	64.06
	14.77	1	.24	.26	64.32
	14.78	1	.24	.26	64.58
	14.79	1	.24	.26	64.84
	14.79	1	.24	.26	65.10
	14.80	1	.24	.26	65.36
	14.81	1	.24	.26	65.62
	14.82	1	.24	.26	65.89
	14.82	1	.24	.26	66.15
	14.83	1	.24	.26	66.41
	14.83	1	.24	.26	66.67
	14.84	1	.24	.26	66.93
	14.86	1	.24	.26	67.19
	14.87	1	.24	.26	67.45
	14.87	1	.24	.26	67.71
	14.89	1	.24	.26	67.97
	14.89	1	.24	.26	68.23
	14.91	1	.24	.26	68.49
	14.95	1	.24	.26	68.75

<i>Value Label</i>	<i>Value</i>	<i>Frequency</i>	<i>Percent</i>	<i>Valid Percent</i>	<i>Cum Percent</i>
	14.96	1	.24	.26	69.01
	14.96	1	.24	.26	69.27
	14.97	1	.24	.26	69.53
	14.98	1	.24	.26	69.79
	14.99	1	.24	.26	70.05
	14.99	1	.24	.26	70.31
	14.99	1	.24	.26	70.57
	15.00	1	.24	.26	70.83
	15.02	1	.24	.26	71.09
	15.03	1	.24	.26	71.35
	15.04	1	.24	.26	71.61
	15.04	1	.24	.26	71.87
	15.04	1	.24	.26	72.14
	15.05	1	.24	.26	72.40
	15.05	1	.24	.26	72.66
	15.06	1	.24	.26	72.92
	15.08	1	.24	.26	73.18
	15.08	1	.24	.26	73.44
	15.08	1	.24	.26	73.70
	15.09	1	.24	.26	73.96
	15.09	1	.24	.26	74.22
	15.10	1	.24	.26	74.48
	15.10	1	.24	.26	74.74
	15.11	1	.24	.26	75.00
	15.11	1	.24	.26	75.26
	15.13	1	.24	.26	75.52
	15.16	1	.24	.26	75.78
	15.17	1	.24	.26	76.04
	15.17	1	.24	.26	76.30
	15.19	1	.24	.26	76.56
	15.20	1	.24	.26	76.82
	15.21	1	.24	.26	77.08
	15.21	1	.24	.26	77.34
	15.22	1	.24	.26	77.60
	15.23	1	.24	.26	77.86
	15.23	1	.24	.26	78.13
	15.24	1	.24	.26	78.39
	15.24	1	.24	.26	78.65
	15.25	1	.24	.26	78.91
	15.26	1	.24	.26	79.17
	15.26	1	.24	.26	79.43
	15.28	1	.24	.26	79.69
	15.28	2	.47	.52	80.21
	15.30	1	.24	.26	80.47
	15.31	1	.24	.26	80.73
	15.32	1	.24	.26	80.99

<i>Value Label</i>	<i>Value</i>	<i>Frequency</i>	<i>Percent</i>	<i>Valid Percent</i>	<i>Cum Percent</i>
	15.34	1	.24	.26	81.25
	15.35	1	.24	.26	81.51
	15.38	1	.24	.26	81.77
	15.39	1	.24	.26	82.03
	15.40	1	.24	.26	82.29
	15.44	1	.24	.26	82.55
	15.45	1	.24	.26	82.81
	15.46	1	.24	.26	83.07
	15.46	1	.24	.26	83.33
	15.46	1	.24	.26	83.59
	15.46	1	.24	.26	83.85
	15.47	1	.24	.26	84.11
	15.47	1	.24	.26	84.38
	15.49	1	.24	.26	84.64
	15.50	1	.24	.26	84.90
	15.51	1	.24	.26	85.16
	15.51	1	.24	.26	85.42
	15.55	1	.24	.26	85.68
	15.60	1	.24	.26	85.94
	15.61	1	.24	.26	86.20
	15.63	1	.24	.26	86.46
	15.64	1	.24	.26	86.72
	15.65	1	.24	.26	86.98
	15.68	1	.24	.26	87.24
	15.68	1	.24	.26	87.50
	15.72	1	.24	.26	87.76
	15.73	1	.24	.26	88.02
	15.74	1	.24	.26	88.28
	15.75	1	.24	.26	88.54
	15.76	1	.24	.26	88.80
	15.76	1	.24	.26	89.06
	15.77	1	.24	.26	89.32
	15.77	1	.24	.26	89.58
	15.78	1	.24	.26	89.84
	15.79	1	.24	.26	90.10
	15.80	1	.24	.26	90.36
	15.82	1	.24	.26	90.63
	15.84	1	.24	.26	90.89
	15.86	1	.24	.26	91.15
	15.86	1	.24	.26	91.41
	15.87	1	.24	.26	91.67
	15.94	1	.24	.26	91.93
	15.98	1	.24	.26	92.19
	16.08	1	.24	.26	92.45
	16.10	1	.24	.26	92.71
	16.13	1	.24	.26	92.97

<i>Value Label</i>	<i>Value</i>	<i>Frequency</i>	<i>Percent</i>	<i>Valid Percent</i>	<i>Cum Percent</i>
	16.15	1	.24	.26	93.23
	16.18	1	.24	.26	93.49
	16.20	1	.24	.26	93.75
	16.22	1	.24	.26	94.01
	16.36	1	.24	.26	94.27
	16.37	1	.24	.26	94.53
	16.39	1	.24	.26	94.79
	16.39	1	.24	.26	95.05
	16.52	1	.24	.26	95.31
	16.53	1	.24	.26	95.57
	16.66	1	.24	.26	95.83
	16.74	1	.24	.26	96.09
	16.77	1	.24	.26	96.35
	16.84	1	.24	.26	96.61
	16.85	1	.24	.26	96.88
	17.02	1	.24	.26	97.14
	17.09	1	.24	.26	97.40
	17.10	1	.24	.26	97.66
	17.18	1	.24	.26	97.92
	17.20	1	.24	.26	98.18
	17.39	1	.24	.26	98.44
	17.53	1	.24	.26	98.70
	17.56	1	.24	.26	98.96
	17.74	1	.24	.26	99.22
	17.85	1	.24	.26	99.48
	17.96	1	.24	.26	99.74
	17.99	1	.24	.26	100.00
	.	38	9.00	Missing	
<i>Total</i>		422	100.0	100.0	

HISTOGRAM



GET

GET FILE="C:\Documents and Settings\Judy\My Documents\RIKI\DATA\PA
\PA1.sav".

warning: `C:\Documents and Settings\Judy\My Documents\RIKI\DATA\PA
\PA1.sav': This system file does not indicate its own character encoding. Using
default encoding CP1252. For best results, specify an encoding explicitly. Use
SYSFILE INFO with ENCODING="DETECT" to analyze the possible encodings.

FREQUENCIES

FREQUENCIES

/VARIABLES= fdorec
/FORMAT=AVALUE TABLE
/STATISTICS=NONE
/HISTOGRAM=NONORMAL.

ecers and fders totals

<i>Value Label</i>	<i>Value</i>	<i>Frequency</i>	<i>Percent</i>	<i>Valid Percent</i>	<i>Cum Percent</i>
	1.71	1	.27	.27	.27
	1.83	1	.27	.27	.54
	1.86	1	.27	.27	.81
	2.03	1	.27	.27	1.08
	2.09	1	.27	.27	1.34
	2.11	1	.27	.27	1.61
	2.16	1	.27	.27	1.88
	2.20	1	.27	.27	2.15
	2.29	1	.27	.27	2.42
	2.31	1	.27	.27	2.69
	2.38	1	.27	.27	2.96
	2.40	1	.27	.27	3.23
	2.44	1	.27	.27	3.49
	2.48	1	.27	.27	3.76
	2.50	1	.27	.27	4.03
	2.51	1	.27	.27	4.30
	2.56	1	.27	.27	4.57
	2.60	1	.27	.27	4.84
	2.64	1	.27	.27	5.11
	2.66	1	.27	.27	5.38
	2.69	1	.27	.27	5.65
	2.71	1	.27	.27	5.91
	2.77	1	.27	.27	6.18
	2.78	1	.27	.27	6.45
	2.79	2	.54	.54	6.99

<i>Value Label</i>	<i>Value</i>	<i>Frequency</i>	<i>Percent</i>	<i>Valid Percent</i>	<i>Cum Percent</i>
	2.81	1	.27	.27	7.26
	2.83	3	.81	.81	8.06
	2.84	1	.27	.27	8.33
	2.88	1	.27	.27	8.60
	2.90	2	.54	.54	9.14
	2.91	2	.54	.54	9.68
	2.95	1	.27	.27	9.95
	2.97	2	.54	.54	10.48
	3.00	3	.81	.81	11.29
	3.07	1	.27	.27	11.56
	3.09	4	1.08	1.08	12.63
	3.10	3	.81	.81	13.44
	3.11	2	.54	.54	13.98
	3.12	1	.27	.27	14.25
	3.13	1	.27	.27	14.52
	3.14	1	.27	.27	14.78
	3.17	1	.27	.27	15.05
	3.19	1	.27	.27	15.32
	3.20	2	.54	.54	15.86
	3.21	1	.27	.27	16.13
	3.22	2	.54	.54	16.67
	3.23	1	.27	.27	16.94
	3.24	1	.27	.27	17.20
	3.25	3	.81	.81	18.01
	3.26	2	.54	.54	18.55
	3.27	1	.27	.27	18.82
	3.28	2	.54	.54	19.35
	3.30	2	.54	.54	19.89
	3.31	3	.81	.81	20.70
	3.33	2	.54	.54	21.24
	3.34	3	.81	.81	22.04
	3.36	2	.54	.54	22.58
	3.38	1	.27	.27	22.85
	3.39	1	.27	.27	23.12
	3.40	4	1.08	1.08	24.19
	3.41	1	.27	.27	24.46
	3.42	2	.54	.54	25.00
	3.43	3	.81	.81	25.81
	3.45	1	.27	.27	26.08
	3.46	1	.27	.27	26.34
	3.51	1	.27	.27	26.61
	3.52	2	.54	.54	27.15
	3.54	3	.81	.81	27.96
	3.55	3	.81	.81	28.76
	3.56	2	.54	.54	29.30
	3.57	1	.27	.27	29.57

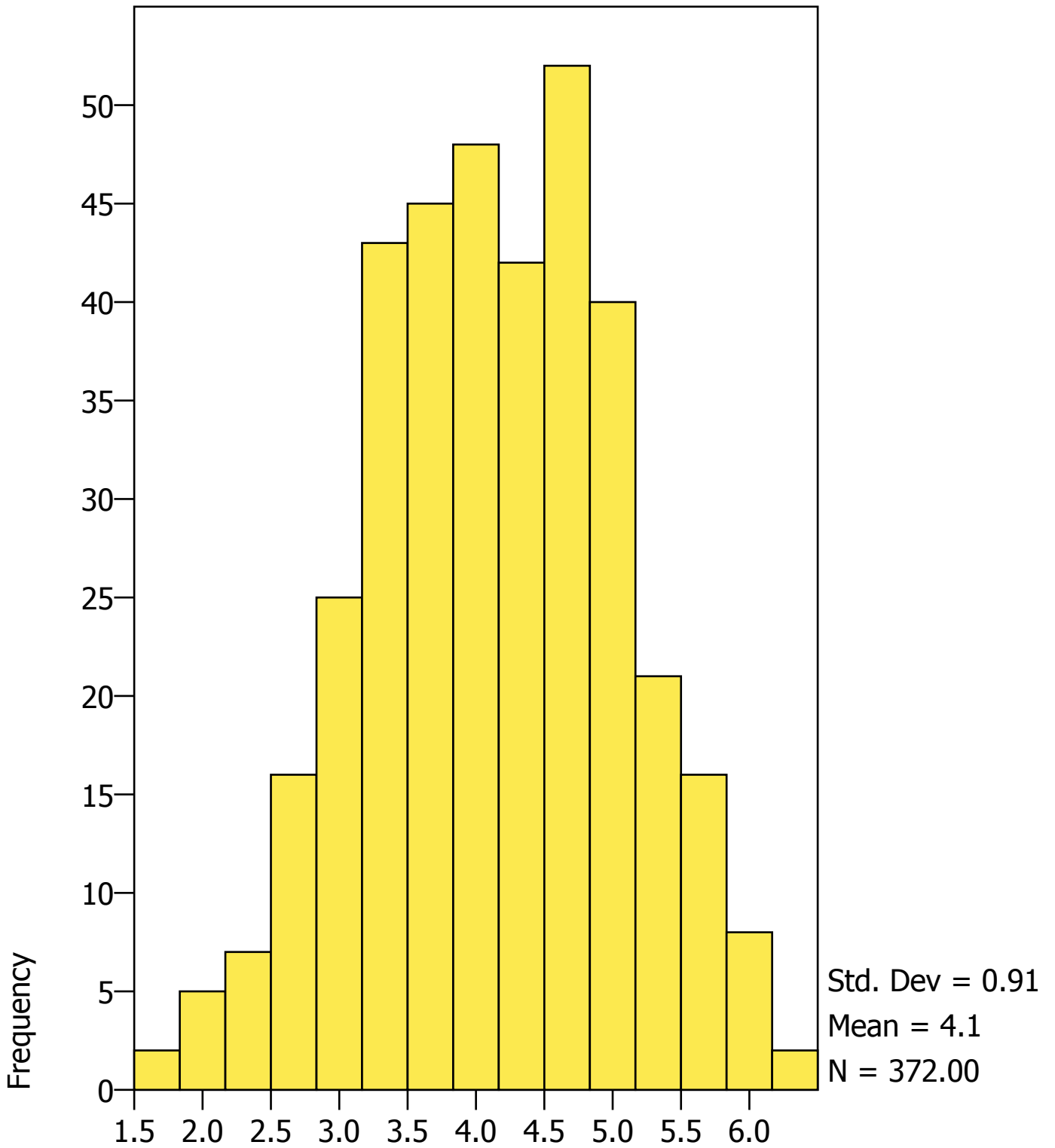
<i>Value Label</i>	<i>Value</i>	<i>Frequency</i>	<i>Percent</i>	<i>Valid Percent</i>	<i>Cum Percent</i>
	3.58	1	.27	.27	29.84
	3.59	1	.27	.27	30.11
	3.60	7	1.88	1.88	31.99
	3.61	1	.27	.27	32.26
	3.62	1	.27	.27	32.53
	3.63	2	.54	.54	33.06
	3.64	1	.27	.27	33.33
	3.65	1	.27	.27	33.60
	3.70	2	.54	.54	34.14
	3.71	3	.81	.81	34.95
	3.72	2	.54	.54	35.48
	3.73	1	.27	.27	35.75
	3.74	1	.27	.27	36.02
	3.77	3	.81	.81	36.83
	3.78	1	.27	.27	37.10
	3.79	2	.54	.54	37.63
	3.80	2	.54	.54	38.17
	3.83	1	.27	.27	38.44
	3.85	1	.27	.27	38.71
	3.86	4	1.08	1.08	39.78
	3.87	1	.27	.27	40.05
	3.88	2	.54	.54	40.59
	3.89	3	.81	.81	41.40
	3.90	6	1.61	1.61	43.01
	3.91	2	.54	.54	43.55
	3.93	2	.54	.54	44.09
	3.95	1	.27	.27	44.35
	3.98	2	.54	.54	44.89
	4.00	3	.81	.81	45.70
	4.02	3	.81	.81	46.51
	4.03	3	.81	.81	47.31
	4.05	1	.27	.27	47.58
	4.06	2	.54	.54	48.12
	4.07	3	.81	.81	48.92
	4.09	1	.27	.27	49.19
	4.11	3	.81	.81	50.00
	4.12	1	.27	.27	50.27
	4.13	2	.54	.54	50.81
	4.14	2	.54	.54	51.34
	4.17	3	.81	.81	52.15
	4.18	2	.54	.54	52.69
	4.20	3	.81	.81	53.49
	4.21	2	.54	.54	54.03
	4.22	1	.27	.27	54.30
	4.23	1	.27	.27	54.57
	4.26	2	.54	.54	55.11

<i>Value Label</i>	<i>Value</i>	<i>Frequency</i>	<i>Percent</i>	<i>Valid Percent</i>	<i>Cum Percent</i>
	4.27	3	.81	.81	55.91
	4.28	2	.54	.54	56.45
	4.29	1	.27	.27	56.72
	4.30	1	.27	.27	56.99
	4.31	4	1.08	1.08	58.06
	4.34	1	.27	.27	58.33
	4.35	1	.27	.27	58.60
	4.37	1	.27	.27	58.87
	4.39	1	.27	.27	59.14
	4.40	4	1.08	1.08	60.22
	4.42	2	.54	.54	60.75
	4.43	2	.54	.54	61.29
	4.44	2	.54	.54	61.83
	4.46	2	.54	.54	62.37
	4.48	1	.27	.27	62.63
	4.50	4	1.08	1.08	63.71
	4.52	2	.54	.54	64.25
	4.53	2	.54	.54	64.78
	4.54	2	.54	.54	65.32
	4.56	2	.54	.54	65.86
	4.57	1	.27	.27	66.13
	4.59	1	.27	.27	66.40
	4.60	5	1.34	1.34	67.74
	4.61	1	.27	.27	68.01
	4.62	3	.81	.81	68.82
	4.63	3	.81	.81	69.62
	4.64	1	.27	.27	69.89
	4.65	2	.54	.54	70.43
	4.66	2	.54	.54	70.97
	4.67	2	.54	.54	71.51
	4.68	1	.27	.27	71.77
	4.69	3	.81	.81	72.58
	4.71	1	.27	.27	72.85
	4.72	1	.27	.27	73.12
	4.73	1	.27	.27	73.39
	4.74	1	.27	.27	73.66
	4.76	1	.27	.27	73.92
	4.77	2	.54	.54	74.46
	4.79	2	.54	.54	75.00
	4.80	1	.27	.27	75.27
	4.81	2	.54	.54	75.81
	4.83	3	.81	.81	76.61
	4.86	1	.27	.27	76.88
	4.88	5	1.34	1.34	78.23
	4.90	3	.81	.81	79.03
	4.91	1	.27	.27	79.30

<i>Value Label</i>	<i>Value</i>	<i>Frequency</i>	<i>Percent</i>	<i>Valid Percent</i>	<i>Cum Percent</i>
	4.93	1	.27	.27	79.57
	4.95	1	.27	.27	79.84
	4.98	3	.81	.81	80.65
	5.00	6	1.61	1.61	82.26
	5.02	3	.81	.81	83.06
	5.03	2	.54	.54	83.60
	5.05	1	.27	.27	83.87
	5.09	4	1.08	1.08	84.95
	5.10	2	.54	.54	85.48
	5.12	2	.54	.54	86.02
	5.13	1	.27	.27	86.29
	5.14	3	.81	.81	87.10
	5.16	1	.27	.27	87.37
	5.17	1	.27	.27	87.63
	5.20	2	.54	.54	88.17
	5.21	1	.27	.27	88.44
	5.22	1	.27	.27	88.71
	5.23	2	.54	.54	89.25
	5.26	1	.27	.27	89.52
	5.31	1	.27	.27	89.78
	5.33	1	.27	.27	90.05
	5.37	2	.54	.54	90.59
	5.38	3	.81	.81	91.40
	5.39	1	.27	.27	91.67
	5.40	1	.27	.27	91.94
	5.41	2	.54	.54	92.47
	5.43	1	.27	.27	92.74
	5.49	1	.27	.27	93.01
	5.50	2	.54	.54	93.55
	5.54	1	.27	.27	93.82
	5.55	1	.27	.27	94.09
	5.57	1	.27	.27	94.35
	5.62	1	.27	.27	94.62
	5.64	1	.27	.27	94.89
	5.66	1	.27	.27	95.16
	5.71	2	.54	.54	95.70
	5.73	2	.54	.54	96.24
	5.74	2	.54	.54	96.77
	5.75	1	.27	.27	97.04
	5.83	1	.27	.27	97.31
	5.88	2	.54	.54	97.85
	5.93	1	.27	.27	98.12
	5.95	2	.54	.54	98.66
	5.98	1	.27	.27	98.92
	6.02	1	.27	.27	99.19
	6.09	1	.27	.27	99.46

<i>Value Label</i>	<i>Value</i>	<i>Frequency</i>	<i>Percent</i>	<i>Valid Percent</i>	<i>Cum Percent</i>
	6.19	1	.27	.27	99.73
	6.29	1	.27	.27	100.00
	<i>Total</i>	372	100.0	100.0	

HISTOGRAM



ecers and fdcrs totals

GET

GET FILE="C:\Documents and Settings\Judy\My Documents\RIKI\DATA\PA\PA2
FCC.sav".

FREQUENCIES

FREQUENCIES

/VARIABLES= FDCRSAverage

/FORMAT=AVALUE TABLE

/STATISTICS=NONE

/HISTOGRAM=NONORMAL.

FDCRS Average

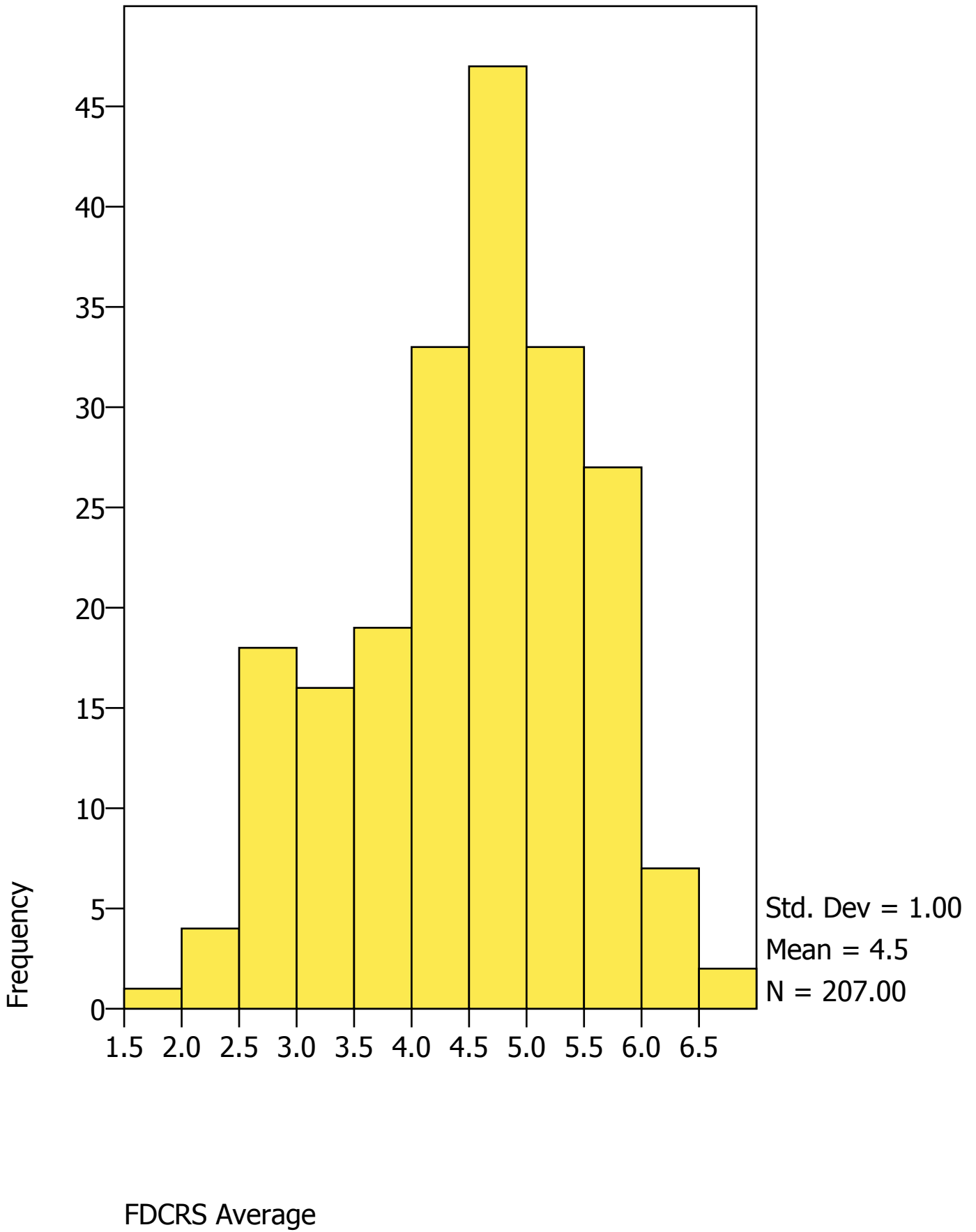
<i>Value Label</i>	<i>Value</i>	<i>Frequency</i>	<i>Percent</i>	<i>Valid Percent</i>	<i>Cum Percent</i>
	2	1	.48	.48	.48
	2	1	.48	.48	.97
	2	1	.48	.48	1.45
	2	1	.48	.48	1.93
	2	1	.48	.48	2.42
	3	1	.48	.48	2.90
	3	1	.48	.48	3.38
	3	2	.96	.97	4.35
	3	1	.48	.48	4.83
	3	1	.48	.48	5.31
	3	1	.48	.48	5.80
	3	1	.48	.48	6.28
	3	1	.48	.48	6.76
	3	1	.48	.48	7.25
	3	1	.48	.48	7.73
	3	1	.48	.48	8.21
	3	1	.48	.48	8.70
	3	1	.48	.48	9.18
	3	1	.48	.48	9.66
	3	1	.48	.48	10.14
	3	1	.48	.48	10.63
	3	1	.48	.48	11.11
	3	1	.48	.48	11.59
	3	1	.48	.48	12.08
	3	2	.96	.97	13.04
	3	1	.48	.48	13.53
	3	1	.48	.48	14.01
	3	1	.48	.48	14.49
	3	1	.48	.48	14.98
	3	1	.48	.48	15.46

<i>Value Label</i>	<i>Value</i>	<i>Frequency</i>	<i>Percent</i>	<i>Valid Percent</i>	<i>Cum Percent</i>
	3	1	.48	.48	15.94
	3	3	1.44	1.45	17.39
	3	1	.48	.48	17.87
	3	1	.48	.48	18.36
	3	1	.48	.48	18.84
	4	3	1.44	1.45	20.29
	4	2	.96	.97	21.26
	4	1	.48	.48	21.74
	4	1	.48	.48	22.22
	4	1	.48	.48	22.71
	4	1	.48	.48	23.19
	4	1	.48	.48	23.67
	4	1	.48	.48	24.15
	4	1	.48	.48	24.64
	4	1	.48	.48	25.12
	4	1	.48	.48	25.60
	4	1	.48	.48	26.09
	4	1	.48	.48	26.57
	4	1	.48	.48	27.05
	4	1	.48	.48	27.54
	4	1	.48	.48	28.02
	4	2	.96	.97	28.99
	4	2	.96	.97	29.95
	4	2	.96	.97	30.92
	4	1	.48	.48	31.40
	4	1	.48	.48	31.88
	4	1	.48	.48	32.37
	4	1	.48	.48	32.85
	4	1	.48	.48	33.33
	4	1	.48	.48	33.82
	4	1	.48	.48	34.30
	4	1	.48	.48	34.78
	4	2	.96	.97	35.75
	4	3	1.44	1.45	37.20
	4	1	.48	.48	37.68
	4	1	.48	.48	38.16
	4	1	.48	.48	38.65
	4	1	.48	.48	39.13
	4	1	.48	.48	39.61
	4	1	.48	.48	40.10
	4	1	.48	.48	40.58
	4	1	.48	.48	41.06
	4	2	.96	.97	42.03
	4	1	.48	.48	42.51
	4	1	.48	.48	43.00
	4	1	.48	.48	43.48

<i>Value Label</i>	<i>Value</i>	<i>Frequency</i>	<i>Percent</i>	<i>Valid Percent</i>	<i>Cum Percent</i>
	4	1	.48	.48	43.96
	5	2	.96	.97	44.93
	5	1	.48	.48	45.41
	5	1	.48	.48	45.89
	5	1	.48	.48	46.38
	5	4	1.92	1.93	48.31
	5	1	.48	.48	48.79
	5	1	.48	.48	49.28
	5	1	.48	.48	49.76
	5	1	.48	.48	50.24
	5	1	.48	.48	50.72
	5	2	.96	.97	51.69
	5	1	.48	.48	52.17
	5	1	.48	.48	52.66
	5	1	.48	.48	53.14
	5	1	.48	.48	53.62
	5	2	.96	.97	54.59
	5	1	.48	.48	55.07
	5	2	.96	.97	56.04
	5	1	.48	.48	56.52
	5	4	1.92	1.93	58.45
	5	2	.96	.97	59.42
	5	2	.96	.97	60.39
	5	3	1.44	1.45	61.84
	5	1	.48	.48	62.32
	5	1	.48	.48	62.80
	5	3	1.44	1.45	64.25
	5	4	1.92	1.93	66.18
	5	1	.48	.48	66.67
	5	2	.96	.97	67.63
	5	1	.48	.48	68.12
	5	1	.48	.48	68.60
	5	1	.48	.48	69.08
	5	1	.48	.48	69.57
	5	1	.48	.48	70.05
	5	3	1.44	1.45	71.50
	5	2	.96	.97	72.46
	5	2	.96	.97	73.43
	5	1	.48	.48	73.91
	5	1	.48	.48	74.40
	5	2	.96	.97	75.36
	5	4	1.92	1.93	77.29
	5	1	.48	.48	77.78
	5	1	.48	.48	78.26
	5	2	.96	.97	79.23
	5	1	.48	.48	79.71

<i>Value Label</i>	<i>Value</i>	<i>Frequency</i>	<i>Percent</i>	<i>Valid Percent</i>	<i>Cum Percent</i>
	5	3	1.44	1.45	81.16
	5	1	.48	.48	81.64
	5	1	.48	.48	82.13
	5	1	.48	.48	82.61
	6	4	1.92	1.93	84.54
	6	1	.48	.48	85.02
	6	1	.48	.48	85.51
	6	1	.48	.48	85.99
	6	1	.48	.48	86.47
	6	1	.48	.48	86.96
	6	1	.48	.48	87.44
	6	1	.48	.48	87.92
	6	3	1.44	1.45	89.37
	6	1	.48	.48	89.86
	6	1	.48	.48	90.34
	6	1	.48	.48	90.82
	6	2	.96	.97	91.79
	6	1	.48	.48	92.27
	6	1	.48	.48	92.75
	6	1	.48	.48	93.24
	6	1	.48	.48	93.72
	6	1	.48	.48	94.20
	6	1	.48	.48	94.69
	6	1	.48	.48	95.17
	6	1	.48	.48	95.65
	6	2	.96	.97	96.62
	6	1	.48	.48	97.10
	6	1	.48	.48	97.58
	6	1	.48	.48	98.07
	6	2	.96	.97	99.03
	7	1	.48	.48	99.52
	7	1	.48	.48	100.00
	.	1	.48	Missing	
<i>Total</i>		208	100.0	100.0	

HISTOGRAM



GET

GET FILE="C:\Documents and Settings\Judy\My Documents\RIKI\DATA\PA\PA2
CCC.sav".

warning: `C:\Documents and Settings\Judy\My Documents\RIKI\DATA\PA\PA2
CCC.sav': This system file does not indicate its own character encoding. Using default
encoding CP1252. For best results, specify an encoding explicitly. Use SYSFILE
INFO with ENCODING="DETECT" to analyze the possible encodings.

FREQUENCIES

FREQUENCIES

/VARIABLES= ECERSAverage
/FORMAT=AVALUE TABLE
/STATISTICS=NONE
/HISTOGRAM=NONORMAL.

ECERS Average

<i>Value Label</i>	<i>Value</i>	<i>Frequency</i>	<i>Percent</i>	<i>Valid Percent</i>	<i>Cum Percent</i>
	1	1	.27	.28	.28
	2	1	.27	.28	.55
	2	1	.27	.28	.83
	2	1	.27	.28	1.10
	2	1	.27	.28	1.38
	2	1	.27	.28	1.66
	2	2	.54	.55	2.21
	2	1	.27	.28	2.49
	2	1	.27	.28	2.76
	2	1	.27	.28	3.04
	2	1	.27	.28	3.31
	2	1	.27	.28	3.59
	2	1	.27	.28	3.87
	2	1	.27	.28	4.14
	3	1	.27	.28	4.42
	3	1	.27	.28	4.70
	3	1	.27	.28	4.97
	3	2	.54	.55	5.52
	3	1	.27	.28	5.80
	3	1	.27	.28	6.08
	3	1	.27	.28	6.35
	3	1	.27	.28	6.63
	3	1	.27	.28	6.91
	3	1	.27	.28	7.18
	3	1	.27	.28	7.46

<i>Value Label</i>	<i>Value</i>	<i>Frequency</i>	<i>Percent</i>	<i>Valid Percent</i>	<i>Cum Percent</i>
	3	1	.27	.28	7.73
	3	1	.27	.28	8.01
	3	1	.27	.28	8.29
	3	1	.27	.28	8.56
	3	1	.27	.28	8.84
	3	3	.81	.83	9.67
	3	1	.27	.28	9.94
	3	1	.27	.28	10.22
	3	1	.27	.28	10.50
	3	1	.27	.28	10.77
	3	1	.27	.28	11.05
	3	1	.27	.28	11.33
	3	1	.27	.28	11.60
	3	1	.27	.28	11.88
	3	1	.27	.28	12.15
	3	1	.27	.28	12.43
	3	1	.27	.28	12.71
	3	1	.27	.28	12.98
	3	2	.54	.55	13.54
	3	1	.27	.28	13.81
	3	1	.27	.28	14.09
	3	1	.27	.28	14.36
	3	1	.27	.28	14.64
	3	1	.27	.28	14.92
	3	1	.27	.28	15.19
	3	1	.27	.28	15.47
	3	2	.54	.55	16.02
	3	1	.27	.28	16.30
	4	1	.27	.28	16.57
	4	2	.54	.55	17.13
	4	1	.27	.28	17.40
	4	1	.27	.28	17.68
	4	1	.27	.28	17.96
	4	1	.27	.28	18.23
	4	3	.81	.83	19.06
	4	1	.27	.28	19.34
	4	1	.27	.28	19.61
	4	1	.27	.28	19.89
	4	1	.27	.28	20.17
	4	1	.27	.28	20.44
	4	1	.27	.28	20.72
	4	1	.27	.28	20.99
	4	2	.54	.55	21.55
	4	1	.27	.28	21.82
	4	2	.54	.55	22.38
	4	1	.27	.28	22.65

<i>Value Label</i>	<i>Value</i>	<i>Frequency</i>	<i>Percent</i>	<i>Valid Percent</i>	<i>Cum Percent</i>
	4	1	.27	.28	22.93
	4	1	.27	.28	23.20
	4	1	.27	.28	23.48
	4	1	.27	.28	23.76
	4	1	.27	.28	24.03
	4	2	.54	.55	24.59
	4	1	.27	.28	24.86
	4	1	.27	.28	25.14
	4	1	.27	.28	25.41
	4	2	.54	.55	25.97
	4	3	.81	.83	26.80
	4	1	.27	.28	27.07
	4	1	.27	.28	27.35
	4	1	.27	.28	27.62
	4	2	.54	.55	28.18
	4	2	.54	.55	28.73
	4	3	.81	.83	29.56
	4	4	1.08	1.10	30.66
	4	1	.27	.28	30.94
	4	1	.27	.28	31.22
	4	2	.54	.55	31.77
	4	1	.27	.28	32.04
	4	1	.27	.28	32.32
	4	1	.27	.28	32.60
	4	1	.27	.28	32.87
	4	3	.81	.83	33.70
	4	1	.27	.28	33.98
	4	2	.54	.55	34.53
	4	3	.81	.83	35.36
	4	1	.27	.28	35.64
	4	5	1.36	1.38	37.02
	4	1	.27	.28	37.29
	4	3	.81	.83	38.12
	4	1	.27	.28	38.40
	4	2	.54	.55	38.95
	4	1	.27	.28	39.23
	4	4	1.08	1.10	40.33
	4	1	.27	.28	40.61
	4	1	.27	.28	40.88
	4	1	.27	.28	41.16
	4	2	.54	.55	41.71
	4	1	.27	.28	41.99
	4	2	.54	.55	42.54
	4	1	.27	.28	42.82
	4	1	.27	.28	43.09
	4	2	.54	.55	43.65

<i>Value Label</i>	<i>Value</i>	<i>Frequency</i>	<i>Percent</i>	<i>Valid Percent</i>	<i>Cum Percent</i>
	4	3	.81	.83	44.48
	4	1	.27	.28	44.75
	4	2	.54	.55	45.30
	4	1	.27	.28	45.58
	4	1	.27	.28	45.86
	4	2	.54	.55	46.41
	5	1	.27	.28	46.69
	5	1	.27	.28	46.96
	5	1	.27	.28	47.24
	5	1	.27	.28	47.51
	5	1	.27	.28	47.79
	5	2	.54	.55	48.34
	5	2	.54	.55	48.90
	5	1	.27	.28	49.17
	5	3	.81	.83	50.00
	5	2	.54	.55	50.55
	5	1	.27	.28	50.83
	5	2	.54	.55	51.38
	5	1	.27	.28	51.66
	5	1	.27	.28	51.93
	5	1	.27	.28	52.21
	5	4	1.08	1.10	53.31
	5	1	.27	.28	53.59
	5	1	.27	.28	53.87
	5	1	.27	.28	54.14
	5	1	.27	.28	54.42
	5	3	.81	.83	55.25
	5	1	.27	.28	55.52
	5	2	.54	.55	56.08
	5	1	.27	.28	56.35
	5	2	.54	.55	56.91
	5	1	.27	.28	57.18
	5	1	.27	.28	57.46
	5	1	.27	.28	57.73
	5	2	.54	.55	58.29
	5	1	.27	.28	58.56
	5	1	.27	.28	58.84
	5	1	.27	.28	59.12
	5	1	.27	.28	59.39
	5	1	.27	.28	59.67
	5	3	.81	.83	60.50
	5	1	.27	.28	60.77
	5	1	.27	.28	61.05
	5	2	.54	.55	61.60
	5	1	.27	.28	61.88
	5	3	.81	.83	62.71

<i>Value Label</i>	<i>Value</i>	<i>Frequency</i>	<i>Percent</i>	<i>Valid Percent</i>	<i>Cum Percent</i>
	5	1	.27	.28	62.98
	5	1	.27	.28	63.26
	5	5	1.36	1.38	64.64
	5	1	.27	.28	64.92
	5	1	.27	.28	65.19
	5	1	.27	.28	65.47
	5	1	.27	.28	65.75
	5	1	.27	.28	66.02
	5	2	.54	.55	66.57
	5	1	.27	.28	66.85
	5	1	.27	.28	67.13
	5	2	.54	.55	67.68
	5	1	.27	.28	67.96
	5	3	.81	.83	68.78
	5	1	.27	.28	69.06
	5	1	.27	.28	69.34
	5	1	.27	.28	69.61
	5	1	.27	.28	69.89
	5	1	.27	.28	70.17
	5	1	.27	.28	70.44
	5	2	.54	.55	70.99
	5	1	.27	.28	71.27
	5	1	.27	.28	71.55
	5	1	.27	.28	71.82
	5	1	.27	.28	72.10
	5	2	.54	.55	72.65
	5	1	.27	.28	72.93
	5	1	.27	.28	73.20
	5	1	.27	.28	73.48
	5	2	.54	.55	74.03
	5	2	.54	.55	74.59
	5	1	.27	.28	74.86
	5	1	.27	.28	75.14
	5	2	.54	.55	75.69
	5	1	.27	.28	75.97
	5	2	.54	.55	76.52
	5	2	.54	.55	77.07
	5	2	.54	.55	77.62
	5	1	.27	.28	77.90
	5	1	.27	.28	78.18
	5	2	.54	.55	78.73
	5	1	.27	.28	79.01
	5	1	.27	.28	79.28
	5	1	.27	.28	79.56
	5	1	.27	.28	79.83
	5	1	.27	.28	80.11

<i>Value Label</i>	<i>Value</i>	<i>Frequency</i>	<i>Percent</i>	<i>Valid Percent</i>	<i>Cum Percent</i>
	5	1	.27	.28	80.39
	5	1	.27	.28	80.66
	5	1	.27	.28	80.94
	5	1	.27	.28	81.22
	5	2	.54	.55	81.77
	5	1	.27	.28	82.04
	5	1	.27	.28	82.32
	5	2	.54	.55	82.87
	5	1	.27	.28	83.15
	5	2	.54	.55	83.70
	5	1	.27	.28	83.98
	5	1	.27	.28	84.25
	6	2	.54	.55	84.81
	6	1	.27	.28	85.08
	6	1	.27	.28	85.36
	6	3	.81	.83	86.19
	6	1	.27	.28	86.46
	6	1	.27	.28	86.74
	6	1	.27	.28	87.02
	6	1	.27	.28	87.29
	6	1	.27	.28	87.57
	6	1	.27	.28	87.85
	6	2	.54	.55	88.40
	6	1	.27	.28	88.67
	6	1	.27	.28	88.95
	6	1	.27	.28	89.23
	6	1	.27	.28	89.50
	6	1	.27	.28	89.78
	6	1	.27	.28	90.06
	6	3	.81	.83	90.88
	6	1	.27	.28	91.16
	6	1	.27	.28	91.44
	6	1	.27	.28	91.71
	6	1	.27	.28	91.99
	6	3	.81	.83	92.82
	6	1	.27	.28	93.09
	6	1	.27	.28	93.37
	6	1	.27	.28	93.65
	6	1	.27	.28	93.92
	6	1	.27	.28	94.20
	6	1	.27	.28	94.48
	6	2	.54	.55	95.03
	6	1	.27	.28	95.30
	6	1	.27	.28	95.58
	6	1	.27	.28	95.86
	6	1	.27	.28	96.13

<i>Value Label</i>	<i>Value</i>	<i>Frequency</i>	<i>Percent</i>	<i>Valid Percent</i>	<i>Cum Percent</i>
	6	1	.27	.28	96.41
	6	1	.27	.28	96.69
	6	1	.27	.28	96.96
	7	1	.27	.28	97.24
	7	1	.27	.28	97.51
	7	1	.27	.28	97.79
	7	1	.27	.28	98.07
	7	1	.27	.28	98.34
	7	1	.27	.28	98.62
	7	1	.27	.28	98.90
	7	1	.27	.28	99.17
	7	1	.27	.28	99.45
	7	1	.27	.28	99.72
	7	1	.27	.28	100.00
	.	7	1.90	Missing	
<i>Total</i>		369	100.0	100.0	

HISTOGRAM

